





Reliable, innovative and flexible supply chain solutions adapted to our customers' needs.

THERE IS NO ONE LIKE US.

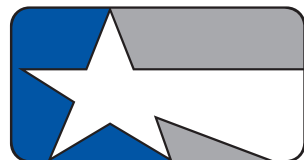


Proud to be The Valley's Bank.

From Starr County to Cameron County, from the Rio Grande Valley to San Antonio, Lone Star National Bank is growing across South Texas. Our banking centers throughout South Texas are providing the resources and the expertise to help Texas businesses grow and prosper, communities expand and invest in the future, and individuals and families succeed in achieving their dreams.

Lone Star National Bank has provided banking services to communities in South Texas for over 40 years. An independent bank with over 3 billion in total assets and thirty-six (36) full-service Banking Centers throughout South Texas.

Come by and meet our outstanding team of bankers. Lone Star National Bank...The Valley's Bank.



**Lone Star
National BankSM**

BROWNSVILLE LOCATIONS

3100 North Indiana Ave. (Port of Brownsville)
2100 Boca Chica Blvd. | 3300 N. Expressway 83 | 101 America Dr.

1-800-580-0322

www.lonestarnationalbank.com



Member FDIC



Green Ship Recycling

usa.emrgroup.com



International Shipbreaking Limited, LLC
Port of Brownsville, Texas



Purchase and Recycling of all Metals, Ships, Offshore Oil Platforms, or other Marine Assets

Immediate Payment, Impeccable Safety Record and Customer Service

EU Ship Recycling Regulation Accreditation

Approved US Navy & US Maritime Administration Ship Recycling Contractor

US Navy Aircraft Carrier Recycling Capacity

1-800-GO-SCRAP



POWERED

BY RAIL & REAL ESTATE

Situated on the border of the United States and Mexico, The Brownsville & Rio Grande International Railway, is a masterfully-run railroad located in an area where global manufacturing and distribution converge. BRG connects customers in need of full-service port, rail connectivity, transload solutions, and industrial real estate development services.

For more information call 800-249-OMNI or visit omnitrax.com

OmniTRAX[®]
POWERED BY RAIL & REAL ESTATE

**WELCOME TO THE
PORT OF BROWNSVILLE DIRECTORY**

The Brownsville Navigation District Board of Commissioners and Port of Brownsville staff welcome you to the Port of Brownsville Directory. Our goal is to provide our tenants, business partners, media and community with detailed information about the port’s capabilities, infrastructure, growth and opportunities.

In this issue, readers will find a valuable resource for contacts, interesting articles, compelling photos, and maps – all to better understand the port.

Welcome to the Port of Brownsville – the port that works!

TABLE OF CONTENTS

Board of Commissioners 6

Chairman’s Letter 7

Port Staff 8

Port Director’s Letter 9

A Central Hub of Commerce and Sustainable Growth 10

On the Horizon 12

Closing Gaps in Cross Border Trade 14

Shipbuilding and Recycling, a Synergy in Motion 16

A Vision Becomes Reality 18

Environmental Stewardship 19

Developing Human Capital 20

Rail Key In Connecting Markets 22

Safety Means Business 23

Fishing Harbor Offers a Taste of the Gulf Coast 24

Respite for Weary Sailors 25

Fast Facts 26

Facility Map

Overall Facilities 36

Business Directory 44

Advertisers’ Directory 63

Alphabetical Listing 65



DIRECTORY

PUBLISHED BY:
PORT OF BROWNSVILLE
1000 Foust Road
Brownsville, TX 78521
Tel (956) 831-4592
Fax (956) 831-5006
www.portofbrownsville.com

PORT DIRECTOR & CEO

Eduardo A. Campirano

EDITOR

Jorge I. Montero

WRITERS

Jorge I. Montero
Christina Garza

PHOTOGRAPHY (Unless indicated otherwise)

Maria Rentrop
Mario Gonzalez
Alex Burrows Photography
Bryan Richey Photography
DELACOLINA Films
Hord Photography

DESIGN

Maria Rentrop

PRINTING

Creasey Printing Services, Inc.

Every effort has been made to ensure the accuracy of the information herein. The Port of Brownsville cannot and does not guarantee the accuracy of all information furnished, or the complete absence of errors and omissions; hence no responsibility for the same can be, or is, assumed.

The Port of Brownsville’s Official Directory is a publication of the Brownsville Navigation District, Brownsville, Texas. Information in this publication, excluding copyrighted photographs and advertisements, may be copied in whole or in part. Credit is requested with the line, “Courtesy of the Port of Brownsville” on all excerpts. Inquiries may be directed to:

PORT OF BROWNSVILLE

Communications Department
1000 Foust Road
Brownsville, TX 78521
www.portofbrownsville.com
© 2023 Brownsville Navigation District

ON THE COVER:

The Port of Brownsville is leading the Rio Grande Valley’s economy, enhancing its status as a vital hub for trade and a catalyst for regional advancement. From significant infrastructure upgrades to expanded capabilities and an unwavering focus on sustainability, the port is at the forefront of the maritime industry. It stands as a symbol of progress for the Rio Grande Valley.



Services

Stevedoring
Warehousing
Trucking & Rail
Ocean freight coordination
Customs coordination
Fully integrated logistics
Vessel agency

Companies

Schaefer Stevedoring
Schaefer Logistics
Schaefer Terminals
Schaefer BMA Colombia
Schaefer & Cía Mexico
IPA Steel Terminal Mexico
Audaxia Logística Mexico
Audaxia Transportes Mexico
Gulf Facilities Warehousing

United States

Brownsville
Corpus Christi
Laredo

Mexico

Altamira
Tampico
Veracruz
Monterrey
San Luis Potosí
Manzanillo
Mazatlan

Colombia

Barranquilla
Cartagena
Santa Marta
Buenaventura

Cargo Types

Steel & Metals
Bulk & Scrap
Wind & Energy
Project
Containers

Storage & Facilities

Inside & Outside Storage
External patios
Complete surveillance
Private railspurs
Public railspurs

Technology

EDI Capability
EDIfact
Shipping software
Online inventory control
X12 // Compord
FTP // ANSI
XML D

Schaefer Stevedoring

4201 Don Foust Road
Brownsville, Texas 78521
T: +1 956-831-4007
schaeferstevedoring.com

Schaefer BMA Colombia

Calle 77B No 59-61, Off: 705
Centro Empresarial Las
Americas II
Barranquilla, Atlantico
Colombia
T: +57 5 358 6978
schaefer-bma.com

Audaxia Logística

Torre Koi
David Alfaro Siqueiros 106
60th Floor, Suite 6003
Col. Valle Oriente
Monterrey, NL 68269
T: +52 818 363 4919
audaxia.mx



Valley Grocers, LLC dba *E de la Garza*

- *since 1918* -

Valley Grocers LLC, with over 100 years of experience, serving independent retailers, convenience stores and food service customers.

We're now expanding our services to include ship supplies out of the Port of Brownsville. You can count on us for high-quality products, timely deliveries, and competitive prices. We offer a wide range of products to meet your needs including:

> BEVERAGES

> CLEANING SUPPLIES

> DRY GOODS

> CANNED GOODS

> SHELF STABLE MILK

> SNACKS

And Much More!



Our team is dedicated to providing you with exceptional service every step of the way. From order placement, to delivery, we'll make sure you have everything you need to keep your ship running smoothly.

Scan and visit
our website

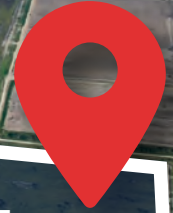


634 E Fronton St Brownsville TX 78520
(956) 542-3576 · valleygrocers.com · info@valleygrocers.com

Built for Growing Business



SCAN THE CODE TO WATCH VIDEO



118-ACRE
SHOVEL-READY BUSINESS PARK

As the only deep-water seaport directly on the U.S.-Mexico border, the Port of Brownsville is the ideal location for growing your business.

SUITED FOR MANUFACTURING & LOGISTICS



18 LOTS AVAILABLE
ALL UTILITIES IN PLACE



FOREIGN-TRADE ZONE #62
DESIGNATED SITE



DIRECT ACCESS TO
USMCA CORRIDOR



CONNECTIVITY TO 3
CLASS 1 RAILROADS



24/7 SECURED
FACILITIES



DIRECT ACCESS TO
OVERWEIGHT CORRIDOR



BROWNSVILLE NAVIGATION DISTRICT BOARD OF COMMISSIONERS



ESTEBAN GUERRA

Chairman



**RALPH
COWEN**

Vice Chairman



**JOHN
WOOD**

Secretary of the Board



**JOHN
REED**

Commissioner



**SERGIO TITO
LOPEZ**

Commissioner

MISSION STATEMENT

The Port of Brownsville will be a leader in developing economic opportunities, improving the quality of life, creating the best transportation facilities possible, and exhibiting high standards of public administration – all with the goal of making the Brownsville area a great place to live and do business.

A LETTER FROM THE CHAIRMAN



Dear Friends of the Port,

The Port of Brownsville is leading the charge for economic development in the Rio Grande Valley and Northern Mexico.

With important private and public projects on the horizon, this year, the Port of Brownsville is moving forward with its most ambitious developments yet, thanks in part to the visionary leadership of the Brownsville Navigation District (BND) Board of Commissioners. The BND and I are proud to maintain a strong financial record for transparency and stewardship, allowing us to invest in extending the life of the port. Notably, our operating revenue for 2022 exceeded \$30 million for the third consecutive year, reaching more than \$38 million. This allows us to invest in essential infrastructure that solidifies the port's international standing as an important component in the supply chain logistics.

As port customers and tenants continue to thrive and expand, infrastructure upgrades are more critical than ever. In 2022, the port handled 15.2 million tons of cargo, a figure that is expected to keep climbing in the coming years. Our rail partners at the Brownsville & Rio Grande International Railway, operated by OmniTRAX, finished 2022 strong, moving 72,616 railcars throughout the year. According to current estimates, 2023 will be another record-breaking year for cargo movement by rail thanks to the success of port tenants and customers.

Work on the port's Brazos Island Harbor Channel Improvement Project has begun. The project, a public private partnership that includes the port, NextDecade and the U.S. Army Corps of Engineers, will deepen the ship channel from 42 to 52 feet, resulting in significant navigational safety improvements for commercial shipping in South Texas.

Recently, we celebrated the groundbreaking of a 118-acre business park designed to meet the growing demand for industrial developments in the area. We anticipate that the operations at the business park will contribute to the upward trend of activity, encouraging sustainable growth among our existing industries and at the same time opening the door to new business partners.

Looking ahead, the Port of Brownsville remains dedicated to fostering growth and prosperity. We are steadfast in our pursuit of excellence, aiming to establish even stronger connections with our partners and stakeholders.

Together, we will continue to unlock the immense potential of our port and ensure a bright future for all.

Thank you,

Esteban Guerra
Chairman
Brownsville Navigation District



1000 Foust Road · Brownsville, TX 78521 · (956) 831-4592

PORT OF BROWNSVILLE LEADERSHIP



EDUARDO A. CAMPIRANO
Port Director & CEO



ARTURO GOMEZ
Deputy Director of Operations



DR. MELINDA RODRIGUEZ
Deputy Port Director of Administration



**ARIEL CHAVEZ III,
P.E./R.P.L.S.**
Director of
Engineering Services



MICHAEL DAVIS
Harbor Master



**WILLIAM G.
DIETRICH**
Chief of Police
& Security



**JOSE A.
HERRERA JR.**
Director of Facilities
Maintenance



JORGE I. MONTERO
Director of
Communications



MARGIE S. RECIO
Director of Administrative
Services



**ANTONIO
RODRIGUEZ, AZS**
Director of Cargo Services
& FTZ Administrator



ZEUS YAÑEZ
Director of Finance



JANIE VELASQUEZ
Administration Manager

A LETTER FROM THE PORT DIRECTOR



Dear Readers,

As the Port Director of the Port of Brownsville, it is my utmost pleasure to update you on one of the most significant announcements in South Texas since the opening of the port in 1936.

In what is guaranteed to have a generational impact, NextDecade Corporation announced in July a positive final investment decision to start construction of its Rio Grande LNG facility at the port. As one of the largest greenfield energy projects financed in U.S. history, Rio Grande LNG will serve as a gateway for natural gas exports, bolstering both the local and national economy.

The Rio Grande LNG project will not only bring substantial economic benefits to our region but also adhere to the highest environmental standards. With a commitment to clean energy, the project will reduce emissions and contribute to a more sustainable future. The Port of Brownsville is a critical asset to the state's energy sector. We are proud to support initiatives that align with our vision for responsible growth and environmental stewardship.

As the leading maritime hub and foremost economic engine for Rio Grande Valley region, the Port of Brownsville continues to make strides earning national prominence for its diverse cargo-handling capabilities.

The U.S. Army Corps of Engineers' most recent annual report ranking 150 maritime ports nationwide shows the port catapulted to 55th position in the country for the movement of waterborne cargo in 2021, a significant leap from 66th place in 2020.

Through strategic planning and innovation, we optimized our logistics and transportation operations, ensuring the smooth flow of goods and facilitating seamless global trade.

Looking ahead, I am optimistic about the future of the Port of Brownsville. Our projections for the coming years are aligned with our commitment to sustained growth and providing unparalleled services to our partners.

The Port of Brownsville continues to attract a diverse range of projects and investments. Our strategic location, extensive infrastructure, and dedicated workforce have made us an ideal choice for businesses looking to expand their operations. We have witnessed notable advancements in industries such as manufacturing, renewable energy, and shipbuilding, further enhancing our position as a leading economic engine in the region.

On behalf of the Port of Brownsville, thank you for your interest and support in the Rio Grande Valley's port for the region.

Respectfully,

Eduardo A. Campirano
Port Director and CEO
Port of Brownsville

1000 Foust Road · Brownsville, TX 78521 · (956) 831-4592

THE PORT OF BROWNSVILLE: A CENTRAL HUB OF COMMERCE AND SUSTAINABLE GROWTH



In the 2021 annual report by the U.S. Army Corps of Engineers, the Port of Brownsville ranks 55th out of 150 maritime ports nationwide for the movement of waterborne cargo.



The Port of Brownsville has been a driving force for the Rio Grande Valley's economy with impacts reaching far across the Lone Star State. In the last decade, the port has made significant strides, bolstering its position as a crucial center for commerce and a catalyst for regional growth. With major infrastructure improvements, increased capabilities, and a strong commitment to sustainability, the Port of Brownsville is leading the way in the maritime industry and a symbol of progress.

Thanks to the port's keen logistical network, the movement of waterborne cargo at the port has continued to rise. According to the U.S. Army Corps of Engineers' the port rocketed to 55th position out of 150 maritime ports nationwide for the movement of waterborne cargo in 2021, ahead of its 66th place in 2020.

The upward trend continues as more than 15.2 million tons of diverse cargo moved through the port in 2022, supporting various industries with efficient and reliable logistical services. This represents a 10.2 percent increase from the 13.8 million tons of cargo recorded in 2021, a new record for the Port of Brownsville. These growing numbers are reflected in the operating revenues as well. Notably, operating revenues for 2022 reached more than \$38 million, surpassing the \$30 million mark for the third consecutive year.

This prudent financial stewardship is the result of the thoughtful and strategic planning set by the Brownsville Navigation District (BND) Board of Commissioners to protect the interests of port tenants and users, constituents, and port assets. The five-member elected commission is chartered by the State of Texas and charged with setting port policy and approving major expenditures. BND Commission members are elected to four-year staggered terms and meet twice monthly, governing the activities of the port.

The BND Commission is comprised of Chairman Esteban Guerra, Vice Chairman Ralph Cowen, Secretary John Wood and Assistant Secretaries John Reed and Sergio Tito Lopez. Management of the port day-to-day activities is accomplished by Port Director and CEO Eduardo A. Campirano.



The Port of Brownsville's 118-acre shovel-ready business park will support manufacturing companies with efficient multimodal transportation and robust storage capabilities.

Robust revenues and sound fiscal stewardship have allowed the BND to invest in the port's projected growth. In June, the port celebrated the groundbreaking of a 118-acre shovel-ready business park that caters to the growing demand for industrial developments in South Texas. The park will complement the port's current efforts to create a diverse business hub, providing vital connections for companies to enhance market reach, supply chain efficiency, and build sustainable, resilient operations. The industrial park, suited for manufacturing and logistics operations, will be completed in Summer 2024.

The Port of Brownsville's Foreign Trade Zone No. 62 remains a leader in exports, ranking second in the nation with exported goods valued at over \$8.2 billion in 2022, according to the 84th Annual Report of the Foreign Trade Zones Board to the Congress of the United States. This marks a significant improvement from the previous year's figure of \$6.9 billion. The Port of Brownsville's FTZ has consistently placed in the top three for exports out of 193 FTZs nationwide since 2012. Furthermore, FTZ No. 62 is ranked 20th in the United States for the value of imports, amounting to \$5.7 billion.

ON THE HORIZON



The Port of Brownsville continues to solidify its role as a critical asset and a key component of the Texas' energy sector. In July, NextDecade Corporation announced it had received a positive final investment decision to move forward with the construction of its Rio Grande LNG plant, a major liquefied natural gas export facility in the United States. The project aligns with the port's objective to drive economic growth, and the benefits are expected to extend to the region, state, and country. Over 5,000 jobs are projected to be created in the area during Phase 1 of the construction of the facility, and this project is estimated to generate an increase in gross domestic product of \$6 billion in Cameron County, \$23 billion in Texas, and up to \$35 billion in the United States.

Once fully operational, the Rio Grande LNG terminal will consist of five trains with the capacity to export 27 million tonnes per annum (MTPA). Phase 1, with nameplate liquefaction capacity of 17.6 MTPA, has already acquired 16.2 MTPA of long-term binding LNG sale and purchase agreements with TotalEnergies, Shell NA LNG LLC, ENN LNG Pte Ltd, Engie S.A., ExxonMobil LNG Asia Pacific, Guangdong Energy Group, China Gas Hongda Energy Trading Co., Galp Trading S.A. and Itochu Corporation. The total project's financing for Phase 1 is \$18.4 billion.



Infrastructure improvements at the port continue with the Brazos Island Harbor (BIH) Channel Improvement Project, which will deepen the 17-mile-long ship channel from 42 to 52 feet. A deeper ship channel will increase the navigability, facilitating the safe passage of ships and reducing transit times. These infrastructure upgrades will significantly boost the port's competitiveness and attract increased investments.

The BIH project, comprised of two phases, is funded through the U.S. Army Corps of Engineers' (USACE) Public-Private Partnership (P3) with the Port of Brownsville and NextDecade.

In 2019, NextDecade announced a landmark agreement with the Brownsville Navigation District to pay 100 percent of Phase 1 of the deepening project from the western boundary of its lease site along the ship channel to the entrance of the channel, as well as the development of two ship berths and a turning basin for the Rio Grande LNG facility. The Port of Brownsville and the USACE will execute Phase 2, which will deepen the channel from the turning basin area to Rio Grande LNG's site. In March 2022, the federal government announced the allocation of \$68 million for Phase 2, provided under the Infrastructure Investment and Jobs Act Appropriations Law. Phase 2 of the project commenced in February.



During the first quarter of 2023, five vessels exported wind project cargo to South America, moving more than 80 windmill blades manufactured locally by TPI Composites at its facility in Matamoros, Mexico. The blades were then transported to the port by truck via the Free Trade International Bridge at Los Indios and securely loaded on to vessels destined for Brazil, Chile, Colombia and Peru.

As the largest land-owning port in the U.S., the Port of Brownsville tops the nation for its capability of receiving, storing and moving wind energy cargo, including the largest windmill blades imported to the U.S. The port's specialized equipment and skilled workforce handle windmill components for transport with ease.

Adapting to changing market dynamics, the Port of Brownsville plays a pivotal role in driving economic growth, creating employment opportunities, and strengthening its position as a critical trade gateway for the United States.

CLOSING GAPS IN CROSS BORDER TRADE

As the only deepwater seaport located directly on the U.S.-Mexico border. The Port of Brownsville is strategically positioned to efficiently serve and connect industries across North America and beyond.

The port is a prominent shipper of steel, refined petroleum products, grain, aggregates, among other products supporting diverse industries located in 12 Mexican states.

The movement of cargo across the border in both directions is made easy thanks to the port's direct connectivity to USMCA interstate corridors, offering a fast route to non-congested international bridge crossings. The Port of Brownsville claims conceptual ownership of Texas' first overweight corridor. Trucks crossing the border in either direction utilizing the specially designated route to or from the port, can load to the legal weight limits of Mexico – 125,000 pounds (45,000 pounds heavier than domestic limits). That translates into real savings in both time, money, and logistical efficiencies.

Convenient and efficient commercial border crossings are located just seven miles from the port by truck or about 13 miles by railroad at the West Rail Bridge. Class 1 rail service to and from the port to Mexico and all of North America includes Canadian Pacific Kansas City de México for operations south of the border, and with Union Pacific and BNSF Railway serving northern routes. On-port rail service is provided by agreement with OmniTRAX, operating the Brownsville Rio Grande International Railway on more than 45 miles of port-owned railroad.

The port's strategic location makes it an attractive place for manufacturing centers in Northeastern Mexico, primarily in the Monterrey, Mexico, area. This logistical advantage has catapulted the Port of Brownsville as the major gateway for steel into Mexico, moving a record



4.6 million tons of steel commodities in 2022.

Steel exports to Mexico are projected to increase to 5.5 million tons in 2023, thanks to the development and expansion of Ternium's industrial Center located in Pesquería, right outside the Monterrey metropolitan area. The company is utilizing the Port of Brownsville for receiving, staging, and shipping all the steel slab processed at its plant, one of the most modern industrial complexes in the world that supports the automotive, construction and white appliances industries in Mexico.

The port worked together with Ternium, port stevedore Gulf Stream Marine, the Brownsville Rio Grande International Railway (BRG), OmniTRAX, and CPKC, on a major patio and transloading development at the port to maximize the efficient loading of open-top gondola railcars and expedite steel slab shipments to feed Ternium's mill in Pesquería.



In June 2023, Ternium announced it will invest \$3.2 billion to build a new steelworks and cold-rolling facility at the company’s existing site in Pesquería. With multiple steel furnaces, the new facility will greatly augment Ternium’s production capacity, enabling it to capitalize on strong international demand. This project includes the construction of a marine terminal at the Port of Brownsville that will support Ternium’s state-of-the-art facility in Mexico.

The Port of Brownsville’s prominence in the steel industry continues to grow with Forza Steel’s investment of more than \$60 million to construct a 650,000-square-foot manufacturing facility at the port. The Mexican company, based out of Salinas Victoria, Mexico, specializes in the manufacturing of carbon steel pipes and tubes for the automotive, construction, and oil and gas industries. The company selected the Port of Brownsville to enhance its operations by getting

closer to their customer base and close gaps in the supply chain.

The port is also a major transshipment center for liquid products like premium gasoline, diesel, jet fuels and lubricants, before being transported to final destinations in South Texas and Mexico. Demand for refined products continues to steadily grow and the port’s capabilities to manage large volumes gives customers the reach into the interior of Mexico – a significant advantage in the competitive market.

In 2022, more than 2.5 million tons of liquid commodities were exported via pipeline from the port’s terminals to Mexico. Refined petroleum storage tank farms continue in expansion mode at the Port of Brownsville, with combined estimates placing storage tank capacity at 8 million barrels, and there’s more under construction.

SHIPBUILDING AND RECYCLING, A SYNERGY IN MOTION

The Port of Brownsville is the only place in the State of Texas where the full life cycle of maritime vessels is witnessed, highlighting the remarkable skillsets the local industrial workforce provides to two specialized maritime industries – shipbuilding and ship recycling.

Seatrium AmFELS, the port's largest employer and the foremost U.S. offshore rig builder, has solidified itself as an important ship builder for the Jones Act market. In July 2023, the company, a member of the Seatrium Group, announced the delivery of the *MV Janet Marie*, the second of two new 'Ohana Class, 774-foot liquefied natural gas-powered container ships built at AmFELS. The new vessel joins Pasha Hawaii's fleet serving the Hawaii/Mainland trade lane, as well as the company's first 'Ohana Class vessel, *MV George III*, also built by the company, which began service on August 17, 2022.

The twin vessels carry up to 5,000 TEUs each and utilize Seatrium AmFELS' proprietary LNG propulsion technology, resulting in reduced air emissions and better fuel efficiency. These new Jones Act vessels surpass the International Maritime Organization (IMO) 2030 emission standards for ocean vessels representing the most technologically advanced and environmentally friendly vessels to serve Hawaii. Energy efficiencies are also achieved with a state-of-the-art engine, an optimized hull form, and an underwater propulsion system with a high-efficiency rudder and propeller.

Seatrium AmFELS is currently working on two major projects. One is the construction of the first Jones Act compliant offshore wind turbine installation vessel that will support U.S. offshore wind projects along the Atlantic Coast. At 472 feet-long, a width of 184 feet and a depth of 38 feet, the *Charybdis* – property of Dominion Energy – will be one of the biggest vessels of its kind in the world. The company's second project is the construction of the *Frederick Paup*, the largest high-specification Trailing Suction Hopper Dredge in

the U.S., being built for Manson Construction Co. This will be the first dredge built at Seatrium AmFELS' yard, adding to the growing number of shipbuilding projects and job opportunities in the South Texas region.

The Port of Brownsville is known as the premier ship recycling port in the nation, thanks to the success of its three major ship recycling facilities, All Star Metals, International Shipbreaking Ltd. (ISL), and SA Recycling/SteelCoast.

These companies capture over 85 percent of the nation's ship recycling business, where U.S. Navy, MARAD and commercial ships berth for the last time. Each of these experienced and safety-driven recycling companies continue to win a steady stream of major recycling contracts from both the U.S. Government and private owners.

Exemplifying the synergy and work of these two legacy



In June, the Brownsville ship channel played host to a fascinating juxtaposition of two containerships. One recently built and the other arriving for recycling. Pasha Hawaii's new *MV Janet Marie* docked at Seatrium AmFELS' shipyard, while Signet Maritime's tugboats towed Pasha's retired *SV Horizon Pacific* to berth at SA Recycling/SteelCoast.

industries at the Port of Brownsville, on June 2023 SA Recycling/SteelCoast, announced the arrival of container vessel *Horizon Pacific* for recycling. The aging vessel, built in 1979, was replaced by the *M/V George III* in Pasha Hawaii's fleet. The *Horizon Pacific* arrived at SteelCoast's yard after a six-week voyage from the West Coast and is currently one of the company's major projects.

The Port of Brownsville has also earned the respected reputation of being the final berthing place for U.S. Navy aircraft carriers and other retired war ships. On May 2022, the *USS Kitty Hawk* became the sixth U.S. Navy aircraft carrier to arrive at the port for recycling. ISL won the Navy contract and responsibility to recycle the 60,000-ton ship, representing the fourth carrier it recycles. The *Kitty Hawk* joins an exclusive and growing family of aircraft carriers – *USS Forrestal* and *USS Saratoga* in 2014; *USS Constellation* and *USS Ranger* in 2015; *USS Independence* in 2017 – that have made

their final voyage and rest in peace at the Port of Brownsville. Another Navy aircraft carrier, the *USS John F. Kennedy*, is expected to arrive by Christmas to ISL's shipyard. The recycling process of the esteemed vessels includes safety and environmental assessment, cleaning/remediation, waste disposal, structural dismantling, demilitarization, and metal processing, separation, and sale.

On June 30, 2023, the U.S. Navy announced the Port of Brownsville as one of three potential locations evaluated in a Final Environmental Impact Statement where the *USS Enterprise* might be sent for recycling. The ship, the world's first nuclear-powered aircraft carrier, was decommissioned in 2017 and the U.S. Navy is currently evaluating where the final berthing place for the ship will be.

ISL is the first and only site in the country to gain accreditation from the European Union to recycle their ships. In 2021, ISL, part of the world-leading recycler EMR Metal Recycling, gained EU Ship Recycling Regulation accreditation for its shipyard after investing \$30 million in compliant infrastructure. And on April 25, 2022, the company announced the completion of the first EU ship recycled in the United States, the *MT Wolverine*. Using innovative and sustainable recycling processes, ISL was able to recycle 97 percent of the materials removed from the 158-meter-long chemical tanker.

The benefits of ship recycling make a significant environmental impact as fewer resources are required to manufacture products from metal scrap as compared to metal ore. Additionally, recycling steel scrap from end-of-life ships reduces air and water pollution and water consumption. This thriving industry supports hundreds of well-paying jobs throughout the Rio Grande Valley, and the employment opportunities continue to grow with each project arriving at the port.





The establishment of the Port of Brownsville in 1936 signaled a new era for the Rio Grande Valley, connecting the economy of South Texas and Northern Mexico with global markets.

A VISION BECOMES REALITY

The Port of Brownsville first opened for business on May 16, 1936, during the height of the Great Depression with the support of the federal government to the fanfare and excitement of cities across South Texas thanks to the vision of Commodore Louis Cobolini.

Cobolini imagined a deepwater seaport would bring significant economic impact to a predominantly agricultural region. He foresaw ocean shipping as vital to the future of the Rio Grande Valley, leading the efforts to establish the first and only deepwater seaport located along the U.S.-Mexico border.

The Port of Brownsville has since created a legacy that has attracted entrepreneurs and businesses for 87 years. Originally focusing on agricultural products, the port shipped locally grown citrus fruits and cotton to overseas markets gaining national recognition as the leading cotton port in the nation.

In the last decade, the Port of Brownsville has undergone significant modernization and diversification efforts. The construction of new terminals, expansion of storage facilities, and improvements in infrastructure have enhanced the port's capabilities to serve diverse industries from steel and energy to space. These developments have solidified the port's position as a vital economic engine for the region and an asset to the state's economy.

The Port of Brownsville's journey of progress includes adapting to meet the changing needs of global trade. Through environmental stewardship and collaborative partnerships, it has established itself as a leading maritime hub with a positive impact on the local economy and the community supporting more than 51,000 jobs in Texas and bringing \$3 billion to the state's economy. Today the port is among the premier shipbuilders for the Jones Act market and a global ship recycling center, providing a solid base for well-paying industrial jobs.

In the works, the port's Brazos Island Harbor Channel Improvement Project to deepen the channel from 42 to 52 feet is among the latest infrastructure improvements sure to transform the economic landscape of the region for the better.

Consistently ranked among the nation's top foreign trade zones, the port connects industries in North America with international markets. The port's Foreign Trade Zone No. 62 ranks second in the U.S. in 2022, with \$8.2 billion in exported goods, up from \$6.9 billion in 2021. The total worth of imported and exported goods transported through FTZ No. 62 in 2022 exceeded \$13 billion.

ENVIRONMENTAL STEWARDSHIP



While the Port of Brownsville has long been recognized as a vital hub for trade and commerce, it has prioritized sustainability and marine conservation through environmental stewardship collaborations.

The Brownsville Navigation District Board of Commissioners have regularly demonstrated a commitment to ecological conservation, most recently via a resolution passed March 15, 2023.

The resolution highlights several efforts including the Bahia Grande Restoration Project, the Endangered Cat Corridor Project, the Peregrine Fund Project for the Protection of the Aplomado Falcon, the Las Lomas Preserve Project, as well as the conservation easements granted in association with port and third-party initiatives. Through these efforts, the port is safeguarding the natural beauty and ecological diversity of the Rio Grande Valley, ensuring a greener future for generations to come.

Known as the premier ship recycling port of the United States, ship dismantling operations at the port are conducted to the highest safest standards. Home to three major ship recycling facilities, All Star Metals, International Shipbreaking Ltd./EMR, and SA Recycling/

portofbrownsville.com

SteelCoast, these companies capture over 85 percent of the U.S. Navy and MARAD ship recycling business. The benefits of ship recycling make a significant environmental impact as fewer resources are required to manufacture products from metal scrap as compared to metal ore. Additionally, recycling steel scrap from end-of-life ships reduces air and water pollution and water consumption.

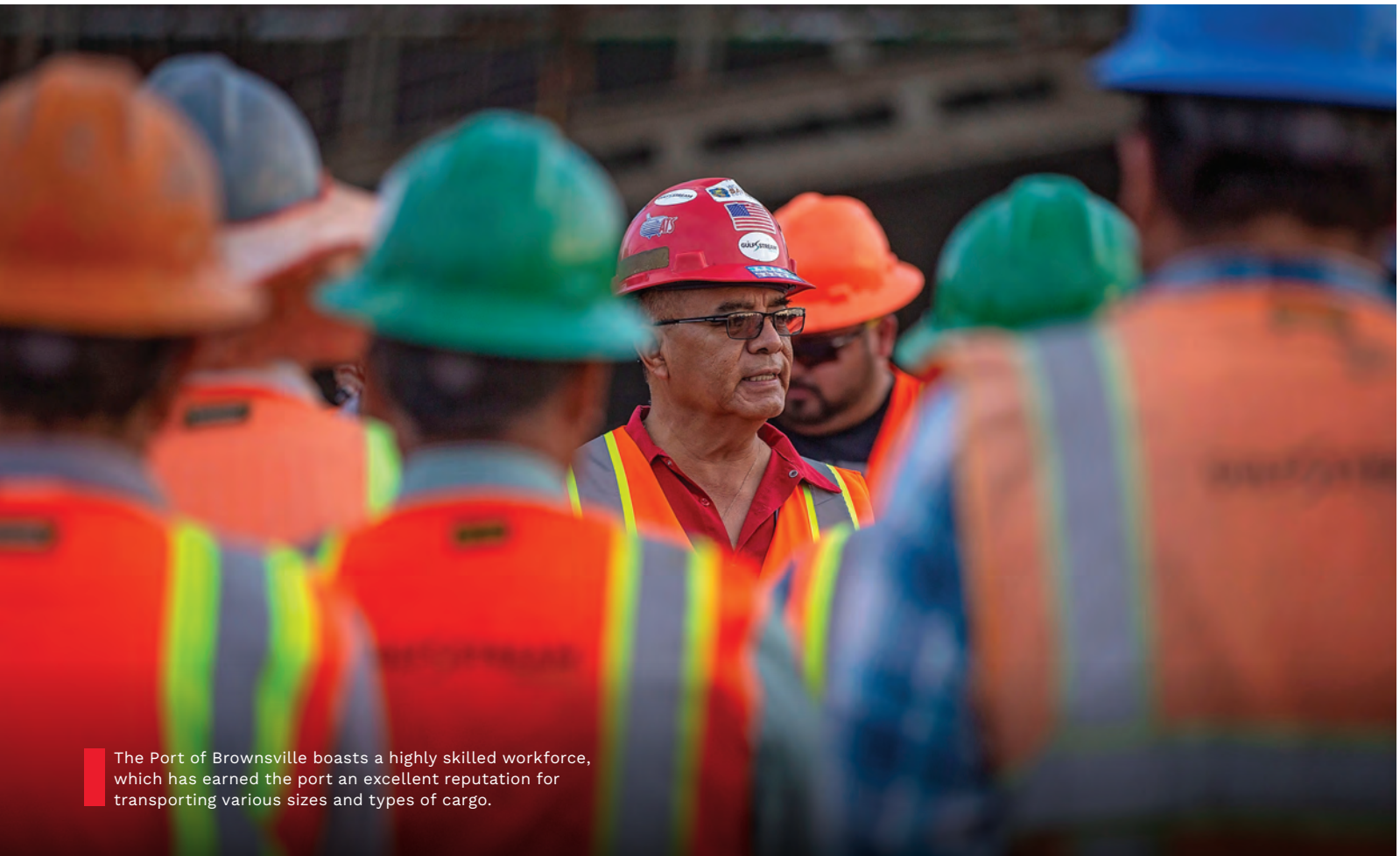
The Port of Brownsville is a vital partner in the Friends of the RGV Reef project, contributing to the creation of an artificial reef that enhances marine biodiversity and recreational opportunities. Covering 1,650 acres and located 12 miles north of the South Padre Island jetties within state territorial waters, RGV Reef is the most extensive artificial reef in Texas and boasts an impressive amount of material. The artificial reef not only enhances biodiversity but also contributes to the local economy by attracting divers, anglers, and ecotourists.

The Port of Brownsville's dedication to environmental stewardship showcases its commitment to protecting the environment while fostering sustainable economic development.

DEVELOPING HUMAN CAPITAL

As the leading economic engine and major job creator for the Rio Grande Valley, the Port of Brownsville sees the development of a highly skilled workforce as central to the economic vitality of the region.

Activity at the port is responsible for more than 51,000 jobs in Texas, generating over \$3 billion in annual state economic activity, according to recent analysis. With over 9,000 regional workers directly employed by activities at the port, it infuses \$2.6 billion annually into the Rio Grande Valley.



The Port of Brownsville boasts a highly skilled workforce, which has earned the port an excellent reputation for transporting various sizes and types of cargo.

The port recognizes the importance of building human capital to sustain existing industries and attract new ones, which is why it collaborates with tenants, local schools, colleges, universities, technical schools, and workforce development leaders to create career opportunities for local residents.

The Port of Brownsville Scholarship Program was established in 2020 to help deserving students pursue higher education and career dreams. Each year, the port awards high school graduating seniors with a \$1,000 scholarship to help them continue their education. To date, the scholarship program has awarded \$126,000 benefitting 126 students attending schools within the navigation district.





Activities at the port are responsible for more than 9,000 jobs in the Rio Grande Valley.

Brownsville is rapidly growing as a global shipbuilding and ship recycling center, providing a solid base for well-paying industrial skilled jobs. The local workforce is technically savvy, adaptable, and motivated to succeed, making them a valuable asset to the port's three skilled stevedoring operations. These companies, Dix Shipping, Schaefer Stevedoring, and Gulf Stream Marine, collaborated in the movement of 13.8 million tons of cargo last year, representing the backbone and muscle of the port that works with impeccable records of safety and efficiency, resulting in staggering economic impacts.





Rail lines at the Port of Brownsville provide seamless connectivity in the port's multimodal logistical chain facilitating the movement of cargo efficiently.

RAIL KEY IN CONNECTING MARKETS

Formed in 1984 by the Brownsville Navigation District, the Brownsville Rio Grande International Railway (BRG) provides consistent, safe and reliable service to Port of Brownsville users, operating on more than 45 miles of rail within the port.

The shortline railroad provider offers the port and its customers access to three Class 1 railroads — Union Pacific, Burlington Northern Santa Fe and Canadian Pacific Kansas City for access into Mexico.

In 2022, the number of annual carloads continued an upward trend with an all-time record-breaking 72,616 movements, a 10.2 percent increase from the previous year which saw 65,865 loaded railcars handled.

The Port of Brownsville services a wide range of diverse and growing industries across North America that rely on the port for the efficient movement of steel, wind energy components, refined petroleum products, aggregates, agriculture products and other commodities to support a thriving supply chain.

Since 2014, OmniTRAX Inc., under agreement, has managed the BRG enhancing services for port rail users while aiming to attract new shippers in the manufacturing and distribution industries.



SAFETY MEANS BUSINESS



The Port of Brownsville Police and Security Department plays a pivotal role in protecting the port's tenants and community interests through land and water patrols to maintain a secure business environment.

The Port of Brownsville Police and Security Department works diligently and tirelessly to maintain the peace and protect life and property at the port.

The team of dedicated sworn police officers and security guards monitor and patrol the 40,000 acres of land and 17-mile-long ship channel to ensure the safety of workers and cargo.

The department is tasked with maintaining operations at the port. Officers stand at the ready to enforce traffic laws to maintain vital operations with 24/7 surveillance by land and water. In addition to patrolling the ship channel, port police and security personnel check the identification of everyone at the port's entrances. Continuous training and investment in infrastructure to provide a secure environment to the port community is vital to the department's success.

Officers participate in the annual Area Maritime Security Training and Exercise Program (AMSTEP) with more than

20 federal, state, and local agencies to assess response capability for security incidents. The department works in close cooperation with the U.S. Coast Guard and U.S. Customs and Border Protection at the federal level, and the Texas Department of Public Safety, the Cameron County Sheriff's office and the Brownsville Police Department at the state and local level supporting the port's security efforts.



FISHING HARBOR OFFERS A TASTE OF THE GULF COAST

The Port of Brownsville's Fishing Harbor is home to a variety of commercial fishing vessels, including shrimp boats, trawlers, and longliners.

The Fishing Harbor provides easy access to the Gulf of Mexico and the Brazos Santiago Pass, which is known for its abundant fishing opportunities. Located on the north side of the Brownsville Ship Channel, about five miles east of the Turning Basin, the fishing harbor features three 14-foot-deep basins with nearly 9,000 linear feet of docks.

Texas fishermen work year-round, but the peak season opens each July with the traditional Blessing of the Fleet. Each year, fishermen and their families gather before leaving port to pray for a bountiful harvest and for the well-being of all shrimpers while at sea. Locally, the port's fleet catches approximately 12 to 14 million pounds of shrimp annually valued at approximately \$72 million. Additionally, the local shrimp industry supports 1,700 jobs in Cameron County.

The Texas Department of Agriculture reports Texas is the top producer of quality, wild-caught shrimp with Texas seafood generating \$846 million in sales and creating 14,134 jobs for Texans.

The fishing harbor is located on the north side of the Brownsville Ship Channel, just a brief five-mile drive east of the Turning Basin with three 14-foot-deep basins and nearly 9,000 linear feet of docks.



The International Seafarer Center offers respite to travelers from all faiths as they dock at the port.

RESPIRE FOR WEARY SAILORS

The International Seafarer Center serves as an oasis of support and respite to mariners from around the world whose vessels call on the Port of Brownsville. The center has been providing spiritual and physical support to honor the challenging lives and work of ship crews since 1974.

Since 2009, Chaplain Andreas Lewis has welcomed guests of all faiths to the center with open arms and support. Chaplain Lewis boards all types of cargo ships, including liquid, bulk, and break-bulk vessels, arriving at the port and provides crew members with SIM cards or helps them with shopping lists. With the center's assistance, seafarers are able to make trips to local stores to purchase supplies such as groceries, equipment, and other goods.

At the modern facility, crew members can enjoy the counsel of Chaplain Lewis or use the center's services to relax and connect with family members. Visits to the Seafarer Center are free, with the center's operating income generated by contributions from visiting vessels, local churches, the sale of SIM cards, and donations to offset transportation costs. The facility is overseen by a six-member board.



Chaplain Andreas Lewis

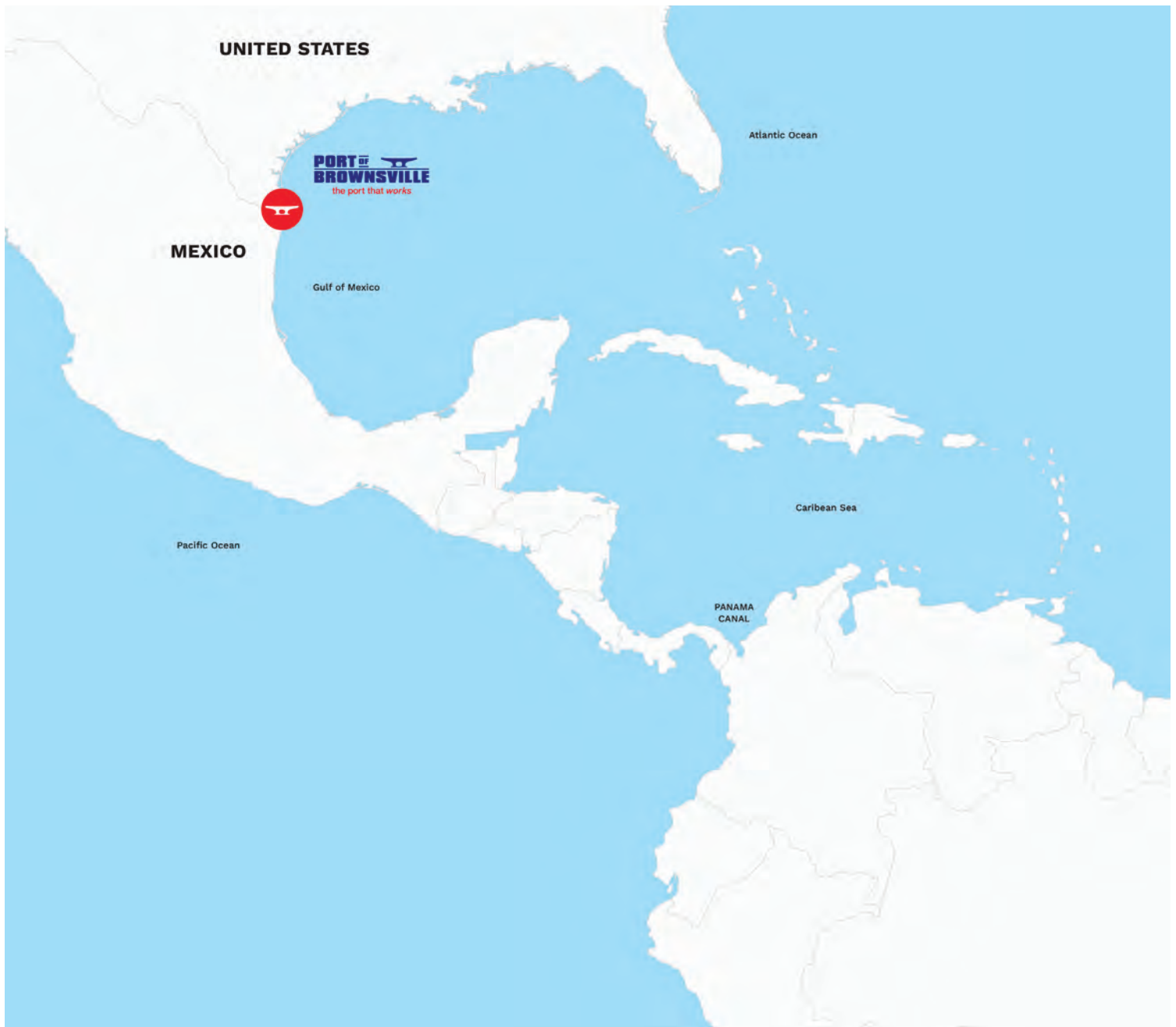
As the number of ships calling at the Port of Brownsville continues to grow, the International Seafarer Center attends to the growing demands of its visitors. Chaplain Lewis is available to those wishing to utilize the center's services by phone at 956-831-4321 or 956-371-6039, or by email at palbro05@gmail.com.

FAST FACTS

LOCATION

The Port of Brownsville is at the southernmost tip of Texas, at the southern terminus of the Gulf Intracoastal Waterway, near the mouth of the Rio Grande.

- Latitude 25°57'3.75N
- Longitude 97°24'1.13"W
- 40,000 acres of land
- 17-mile-long ship channel





The Port of Brownsville is the only deepwater seaport directly on the U.S.-Mexico border, and the largest land-owning public port authority in the U.S. with 40,000 acres of land.

INTERMODAL CONNECTIVITY

The Port of Brownsville offers easy highway and interstate connections with access to Interstate 69, via State Highway 550 (soon to be renamed Interstate 169), and to State Highway 48. Crossing the border with cargo to and from Mexico is simple. The port is only 7.4 miles from the Veterans International Commercial Bridge and 29 miles to the Free Trade Commercial Bridge at Los Indios.

NEARBY INTERSTATES AND HIGHWAYS

UNITED STATES

- Interstate 69E
- Interstate 169
- Interstate 2
- U.S. Highway 281
- U.S. Highway 77
- U.S. Highway 83
- State Highway 550
- State Highway 48
- State Highway 4

MEXICO

- Federal Highway 2
- Federal Highway 101
- Federal Highway 40/40D (Interoceanic Highway)



DISTANCE FROM THE PORT OF BROWNSVILLE TO:

UNITED STATES

McAllen	60 miles
Corpus Christi	161 miles
Laredo	205 miles
San Antonio	278 miles
Austin	350 miles
Houston	355 miles
Dallas	550 miles
New Orleans	700 miles
Oklahoma City	738 miles
Tulsa	802 miles
El Paso	830 miles
St. Louis	1,200 miles
Denver	1,210 miles
Phoenix	1,259 miles
Chicago	1,430 miles
Columbus, OH	1,507 miles

MEXICO

Matamoros	9 miles
Reynosa	71 miles
Monterrey	200 miles
Ciudad Victoria	210 miles
Saltillo	268 miles
Tampico	321 miles
Torreón	404 miles
San Luis Potosí	415 miles
León	534 miles
Durango	578 miles
Guadalajara	627 miles
Mexico City	656 miles
Chihuahua	713 miles
Mazatlán	731 miles
Coatzacoalcos	797 miles
Mérida	1,243 miles



NEARBY INTERNATIONAL BRIDGES (UNITED STATES/MEXICO CROSSINGS)

GATEWAY INTERNATIONAL BRIDGE Brownsville, TX/Matamoros, Tam	6.8 miles
VETERANS INTERNATIONAL BRIDGE AT LOS TOMATES Brownsville, TX/Matamoros, Tam	7.4 miles
BROWNSVILLE MATAMOROS INTERNATIONAL BRIDGE Brownsville, TX/Matamoros, Tam	7.6 miles
BROWNSVILLE WEST RAIL Brownsville, TX/Matamoros, Tam	13 miles
FREE TRADE BRIDGE AT LOS INDIOS Los Indios, TX/Lucio Blanco, Tam	29 miles
WESLACO-PROGRESO INTERNATIONAL BRIDGE Progreso, TX/Nuevo Progreso, Tam	39.9 miles
DONNA INTERNATIONAL BRIDGE Donna, TX/Rio Bravo, Tam	46.7 miles
PHARR-REYNOSA INTERNATIONAL BRIDGE Pharr, TX/Reynosa, Tam	61 miles
MCALLEN-HIDALGO INTERNATIONAL BRIDGE Hidalgo, TX/Reynosa, Tam	66.3 miles
ANZALDUAS INTERNATIONAL BRIDGE Mission, TX/Reynosa, Tam	69.6 miles

RAILROAD

The Brownsville Rio Grande International Railway (BRG) offers Port of Brownsville customers efficient and reliable railroad service with more than 45 miles of rail within the port, and connects to three Class I railroads – Union Pacific, BNSF, and Canadian Pacific Kansas City for access into Mexico.

The BRG is operated by OmniTRAX.

BROWNSVILLE RIO GRANDE INTERNATIONAL RAILWAY (BRG)

12650 State Hwy. 48
Brownsville, TX 78521
Shariff Gonnella, President
(956) 548-9202
sgonnella@omnitrax.com
www.omnitrax.com

BURLINGTON NORTHERN SANTA FE RAILWAY (BNSF)

4433 Exchange Ave.
Vernon, CA 90058
Samantha Galltin, Director, Port Business Development
(323) 277-2016
samantha.galltin@bnsf.com
www.bnsf.com

CANADIAN PACIFIC KANSAS CITY (CPKC)

Ave. Manuel L. Barragán 4850 Norte
Col. Hidalgo, Monterrey, Nuevo Leon, MX CP 64290
David Eaton, Business Development Country
Director - Mexico
(+52) 818 305-7850
deaton@cpkcm.mx
www.cpkcsr.com/es-mx

OMNITRAX INC. (BRG)

252 Clayton St., 4th Floor
Denver, CO 80206
Tony Chavez, Vice President of Business Development
(832) 462-5111
tchavez@omnitrax.com
www.omnitrax.com

UNION PACIFIC RAILROAD

24125 Aldine Westfield Road
Spring, TX 77373
(281) 350-7592
Juan P. Montalvo, Lead Sales - Southern Region
jpmontal@up.com
www.up.com





CRANES

TEREX GOTTWALD HMK 300E

- Multi-purpose crane handling project, heavy-lift bulk, breakbulk and general cargo.
- **Lifting capacity:** 110 short tons.
- **Maximum Radius:** 164 feet.
- **Eye view from operator's cab:** 75.46 feet.

TEREX GOTTWALD G HMK 6507

- Multi-purpose crane handling project, heavy-lift bulk, breakbulk and general cargo.
- **Lifting capacity:** 138 short tons.
- **Maximum Radius:** 167 feet.
- **Eye view from operator's cab:** 85.6 feet.

TEREX GOTTWALD G HMK 6507

- Multi-purpose crane handling project, heavy-lift bulk, breakbulk and general cargo.
- **Lifting capacity:** 138 short tons.
- **Maximum Radius:** 167 feet.
- **Eye view from operator's cab:** 85.6 feet.

PRIMARY COMMODITIES

Steel slabs, plates, wire rod, hot and cold rolled steel, beams, pipe, pig iron, ingots, and chrome ore.

Petroleum, including lubricants, gasoline, jet fuel, diesel, No. 6 oil, naphtha, vacuum gas oils.

Wax, latex, asphalt, aluminum, machinery, wind energy components, space industry components, barite, pet coke, scrap metals, limestone, sand, grain, sugar, rutile ore, bauxite, minerals, cement, salt.



SHIP CHANNEL AND TURNING BASIN

- **Length:** 17 miles, meeting the Gulf of Mexico at the Brazos Santiago Pass.
- **Draft:** 44 ft. at entrance, 42 ft. up to the Turning Basin, 36 ft. in the Turning Basin.
- **Channel deepening project** from 42 ft. to 52 ft. began 2023.
- **Turning Basin Width:** 1,200 ft.
- **Miles to ship buoy:** 1.7

LARGEST VESSEL TURNED

- **Length:** 1,000+ ft.
- **Beam:** 157 ft.

FOREIGN TRADE ZONE NO. 62

In 2022, FTZ No. 62 ranked 2nd in the nation for the value of exports and has consistently ranked in the top three out of 193 FTZs nationwide since 2012.

SCALE HOUSES

PORT PUBLIC SCALE

3501 Foust Road • Brownsville, TX 78521
Tel (956) 838-0606
publicscale@yahoo.com
M-F, 9 a.m. – 6 p.m.

QUALITY WEIGHING SERVICES INC.

875 N. Milo Road • Brownsville, TX 78521
Tel (956) 831-8253
qualityweighing@att.net
M-F, 8 a.m. – 6 p.m.

WESTPLAINS LLC

9155 R.L. Ostos Road • Brownsville, TX 78521
Tel (956) 620-2020
M-F, 8 a.m. – 5 p.m.

HARBOR MASTER OFFICE

400 Windhaus Road • Brownsville, TX 78521
(956) 831-8256 (24/7)
Marine VHF Radio Channels 12 and 16
Michael Davis, Harbor Master
Carlos Martinez, Assistant Harbor Master

BRAZOS SANTIAGO PILOTS

P. O. Box 414 • Port Isabel, TX 78578
(956) 943-3680
www.brazossantiagopilots.com

PORT POLICE & SECURITY

2993 N. Indiana Ave. • Brownsville, TX 78526
(956) 509-2100 Office
(956) 831-8256 (24/7)
William G. Dietrich, Police Chief

U.S. COAST GUARD MSD BROWNSVILLE

(956) 832-0517
www.uscg.mil/d8/sectcorpuschristi

U.S. CUSTOMS & BORDER PROTECTION

(956) 831-4121 or (956) 983-5854

UTILITY COMPANIES

AEP TEXAS

355 W. Hwy. 77 • San Benito, TX 78586
(956) 361-2088 Fax (956) 361-2090
Contact: Danny Lucio, External Affairs Manager
dlucio@aep.com
www.aeptexas.com

BROWNSVILLE PUBLIC UTILITIES BOARD (BPUB)

1425 Robinhood Drive • Brownsville, TX 78521
(956) 983-6242
Contact: Eduardo Campirano Jr., Key Accounts Manager
Email: ecampiranojr@brownsville-pub.com
www.brownsville-pub.com

MAGIC VALLEY ELECTRIC COOPERATIVE

1 ¾ Mile W. Hwy. 83 • Mercedes, TX 78570
(956) 289-4071
Contact: Abraham Quiroga, Business Development
Division Manager
aquiroga@magicvalley.coop
www.magicvalley.coop

TEXAS GAS SERVICE

P.O. Box 531827 • Harlingen, TX 78553
(956) 444-3913 or (956) 357-3106
Contact: Victor Lopez, Sales Representative
victor.lopez@onegas.com
www.onegas.com

BROWNSVILLE AND THE RIO GRANDE VALLEY AT A GLANCE

Brownsville is the county seat of Cameron County, Texas, and the 16th most populous city in Texas with a 2020 population estimated at 186,738. Located at the southernmost tip of Texas on the northern bank of the Rio Grande, Brownsville is directly north and across the border from Matamoros, Tamaulipas, Mexico. The historic city served as a site for several battles and events in the Texas Revolution, the Mexican–American War, and the American Civil War.

The Rio Grande Valley of Texas, covers 1,881 square miles, has a population of approximately 1.5 million, and is comprised of 46 cities and towns and more than 100 communities. Additionally, the RGV enjoys close personal and professional relationships with the people in the Mexican states of Tamaulipas and Nuevo Leon.

PORT ECONOMIC IMPACT

- 51,468 Texas jobs created by port activity
- \$3 billion of total state economic activity
- \$201 million in federal, state and local taxes
- \$2.6 billion total personal income and local consumption

Source: The Economic Impacts of the Port of Brownsville, 2018, Martin Associates

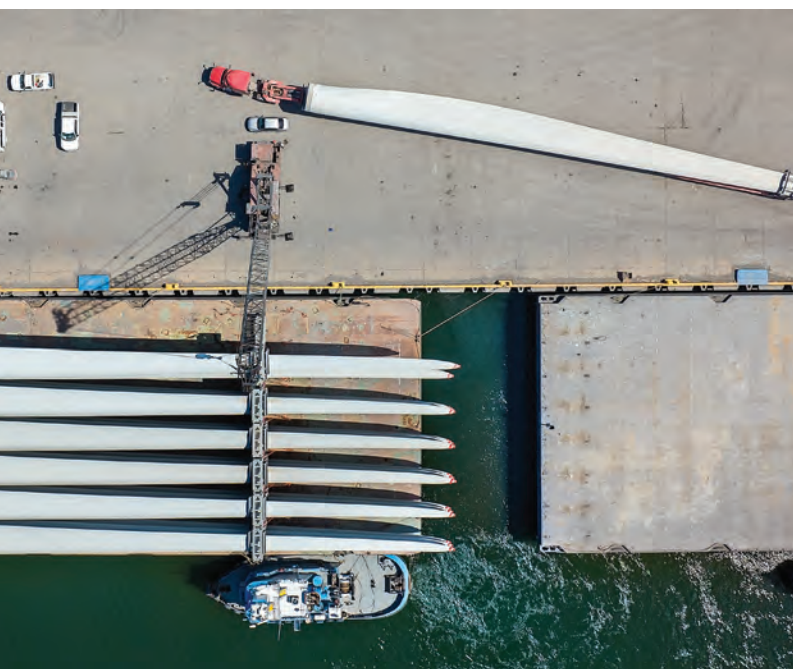
HIGHER EDUCATION INSTITUTIONS

- University of Houston
- Texas State Technical College
- Texas Southmost College
- Texas A&M University
- The University of Texas Rio Grande Valley
- South Texas College
- Our Lady of the Lake University

ECONOMIC DEVELOPMENT ORGANIZATIONS

- Greater Brownsville Incentives Corporation
- Harlingen Economic Development Corporation
- McAllen Economic Development Corporation
- Mission Economic Development Corporation
- RGV Partnership

See page 49 for full list of regional economic development organizations.





The Port of Brownsville offers seamless logistics, connecting industries in North America with international markets.

POWERING WIND ENERGY

Let the Port of Brownsville be your gateway to North America and beyond.

OUR ADVANTAGE

- 80+ acres of purpose-built facilities to accommodate heavy point-load bearing cargo
- Receiving and shipping wind energy components via vessel, barge, truck, and rail
- Direct Access to USMCA Interstate Corridors
- Class 1 Rail Service in U.S. and Mexico (UP, BNSF, CPKC)
- More than 3 million sq. ft. of open storage
- 13 general cargo docks
- Channel Depth: 42 ft.; channel deepening to 52 ft. underway
- Foreign Trade Zone No. 62



SCAN THE CODE
TO WATCH VIDEO

CONTACT US

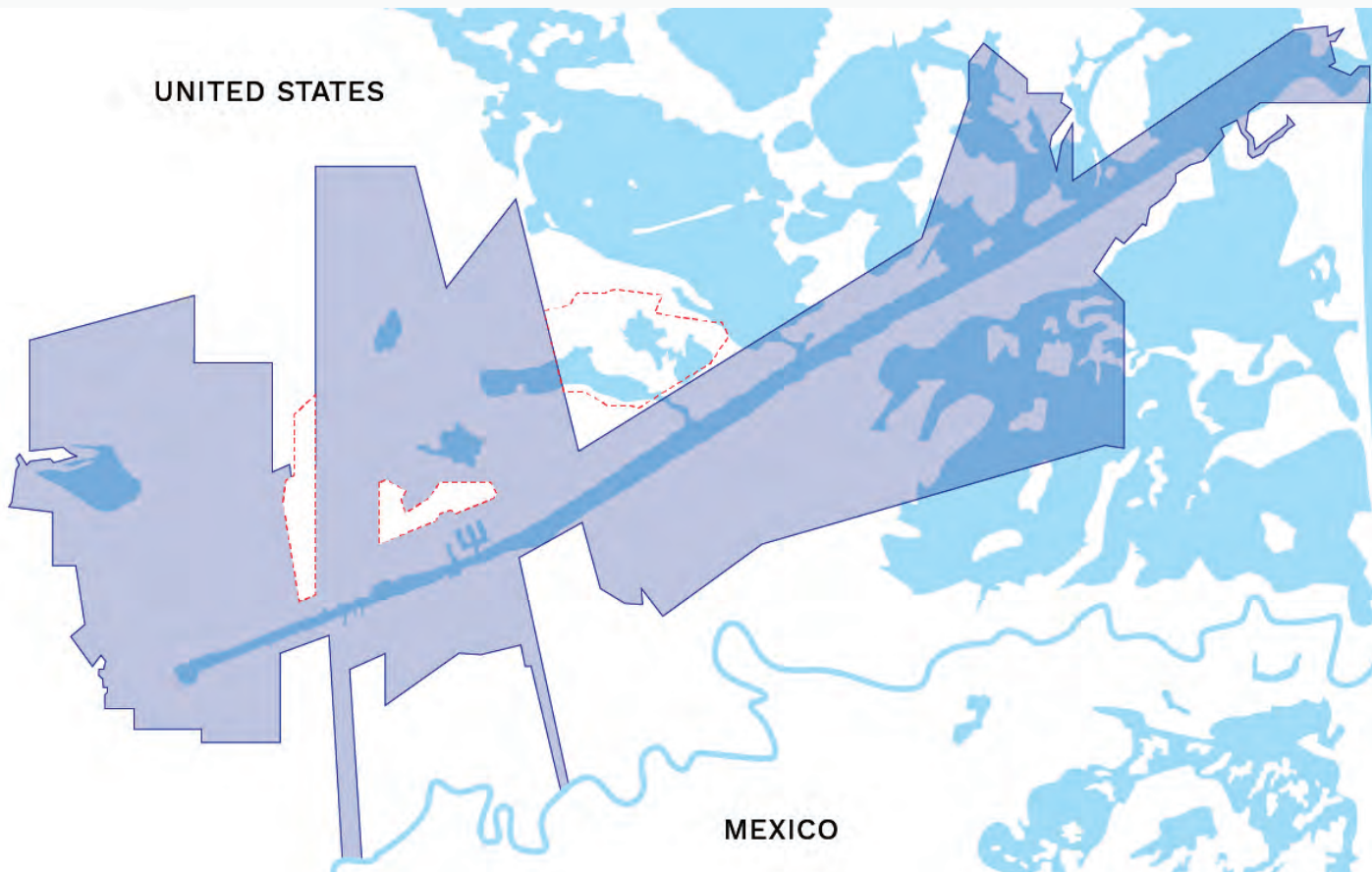
1000 Foust Road Brownsville, TX 78521
+1 (956) 831-4592
www.portofbrownsville.com

**PORT OF
BROWNSVILLE**
the port that works

PRIME LOCATION

The Port of Brownsville's proximity to Mexico, and the rest of Latin America, uniquely positions the port to serve as the transshipment gateway delivering goods and materials to nearby multinational manufacturing centers on both sides of the border.

More than 10 million consumers are within a three-hour drive of the port, with many of those located across the border.



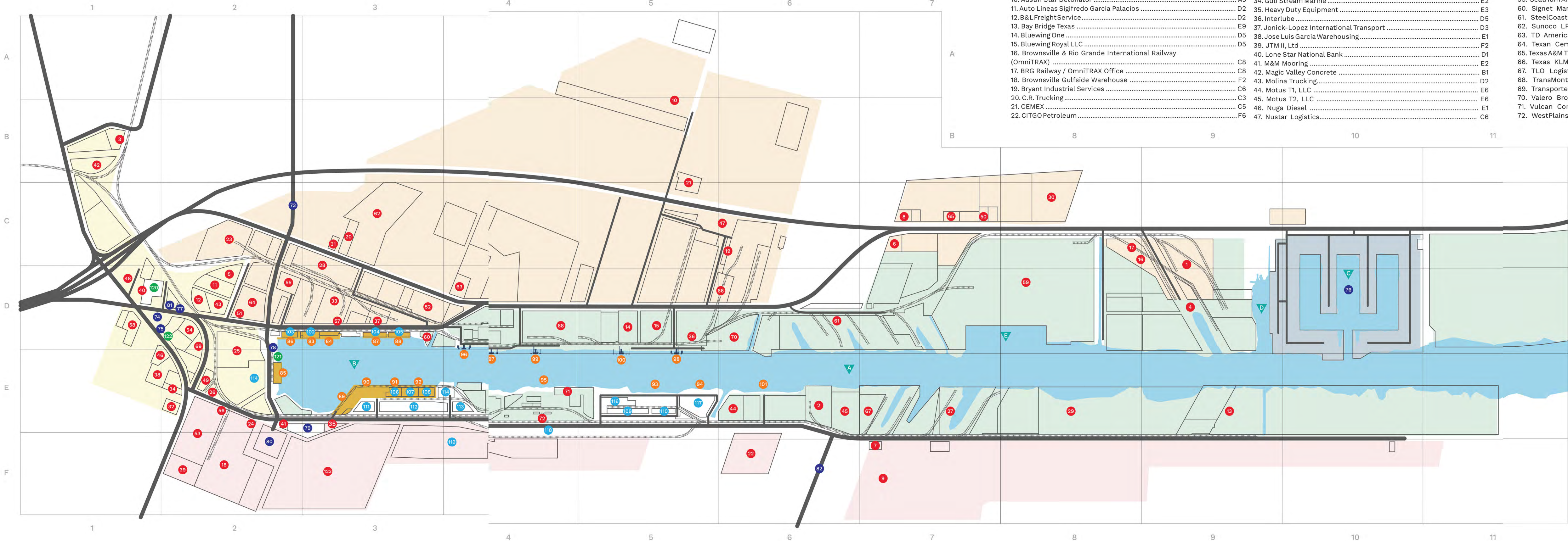
PORT OF BROWNSVILLE BOUNDARIES

The Port of Brownsville is the largest land-owning public port authority in the U.S. with approximately 40,000 acres. The District's boundary lines stretch to the Rio Grande River, making it the only deepwater seaport directly on the U.S.-Mexico border.



FACILITY MAP

FOR AVAILABLE PROPERTY AND LEASE RATES
CONTACT THE INDUSTRIAL DEVELOPMENT
DEPARTMENT: (956) 838-7019.



TENANTS

1. 905/BMW	C9
2. ABC Gulf Coast Terminal	E6
3. Alamo Concrete Products	B1
4. All Star Metals	D9
5. Allied Mineral Products	D2
6. American Oxygen Co	C7
7. AMSPEC	F7
8. Arguindegui Oil Co	C7
9. ARX ENERGY, LLC	F7
10. Austin Star Detonator	A5
11. Auto Lineas Sigifredo Garcia Palacios	D2
12. B&L Freight Service	D2
13. Bay Bridge Texas	E9
14. Bluewing One	D5
15. Bluewing Royal LLC	D5
16. Brownsville & Rio Grande International Railway (OmniTRAX)	C8
17. BRG Railway / OmniTRAX Office	C8
18. Brownsville Gulfside Warehouse	F2
19. Bryant Industrial Services	C6
20. C.R. Trucking	C3
21. CEMEX	C5
22. CITGO Petroleum	F6
23. CSC Sugar / Sugaright	C2
24. Dix Shipping	E2
25. Duro Bag/Novolex	E2
26. Electro-Hi	E2
27. EMR/International Shipbreaking	E7
28. Firebird Bulk Carriers	D3
29. Fortune Ferrous	E8
30. Forza Steel, LLC	C8
31. Frajara Express, LLC	C3
32. GDO Trucking	E2
33. Gulf Facilities	D3
34. Gulf Stream Marine	E2
35. Heavy Duty Equipment	E3
36. Interlube	D5
37. Jonick-Lopez International Transport	D3
38. Jose Luis Garcia Warehousing	E1
39. JTM II, Ltd	F2
40. Lone Star National Bank	D1
41. M&M Mooring	E2
42. Magic Valley Concrete	B1
43. Molina Trucking	D2
44. Motus T1, LLC	E6
45. Motus T2, LLC	E6
46. Nuga Diesel	E1
47. Nustar Logistics	C6

48. Palo Alto Investments	D1
49. Plitt Crane	E2
50. Port Occupational and Medical Clinic	C7
51. Port of Brownsville Public Scale	D2
52. Port of Brownsville Recycling	D3
53. Port Warehouse Properties	F2
54. Quality Weighing Service	D2
55. RM Walsdorf	D2
56. Rodicel	E2
57. Schaefer Stevedoring	D3
58. Seahorse Transportation	D1
59. Seatrium AmFELS	D8
60. Signet Maritime	D3
61. SteelCoast	D6
62. Sunoco LP	C3
63. TD American Limestone Products	D4
64. Texas Cement	D2
65. Texas A&M TRAIN Es Tu Futuro	C7
66. Texas KLM LLC	D6
67. TLO Logistics	E7
68. TransMontaigne	D4
69. Transporte Internacional Lopez Ochoa	D2
70. Valero Brownsville Terminal	D6
71. Vulcan Construction Materials	E4
72. WestPlains	E4

FACILITIES

73. SH 550 Entrance	C2
74. Administration Complex	D1
75. Command Center	D3
76. Fishing Harbor	D10
77. Foust Road Entrance	D2
78. Harbor Master Office	D2
79. Maintenance Shop	E3
80. Ostos Road Truck Staging Area	F2
81. Permit Office	D2
82. South Port Connector Road Entrance	F6

DOCKS

83. Dock 1	D3
84. Dock 2	D3
85. Dock 3	E2
86. Dock 4	D2
87. Dock 7	D3
88. Dock 8	D3
89. Dock 10	E3
90. Dock 11	E3
91. Dock 12	E3
92. Dock 13	E3
93. Dock 15	E5
94. Dock 16	E5
95. Bulk Cargo Dock	E4
96. Liquid Cargo Dock 1	E4
97. Liquid Cargo Dock 2	E4
98. Liquid Cargo Dock 3	E5
99. Liquid Cargo Dock 5	E4
100. Liquid Cargo Dock 6	E5
101. Liquid Cargo Dock	E6

SHEDS AND PATIOS

102. Shed 1	D3
103. Shed 4	D2
104. Shed 7	D3
105. Shed 8	D3
106. Shed 12	E3
107. Shed 13	E3
108. Shed 14	E3
109. Shed 15W	E5
110. Shed 15E	E5
111. Patio 11	E3
112. Patio 12	E3
113. Patio 13	E4
114. Patio 14	E4
115. West Patio	E2
116. Patio 15	E5
117. Patio 16	E5
118. Patio 20	E4
119. Patio 22	F4

SERVICES

120. Brownsville Fire Department Station 8	D1
121. International Seafarer Center	E2
122. U.S. Coast Guard	D2

PORT OF BROWNSVILLE BUSINESS PARK

123. Port of Brownsville Business Park	F3
--	----

SHIP CHANNEL DEPTHS

A. Ship Channel: 42 ft. draft	E6
B. Turning Basing: 36 ft. 5 in. draft	E4
C. Fishing Harbor: 14 ft. draft	D10
D. Fleeting Area: 13 ft. draft	D9
E. Seatrium AmFELS: 90+ ft. draft	D8



GLOBAL REACH

From its strategic location in the western Gulf of Mexico, no other port better serves the commercial interests of both the United States and Mexico than the Port of Brownsville.

It is well positioned to participate in trade utilizing the Panama Canal and is in close proximity to key markets throughout North America.



OVERALL FACILITIES



Approximately

40,000

Acres of Land



1 M SQFT

Covered Storage



13

Cargo Docks



3 M SQFT

Open Storage



6

Liquid Cargo Docks



39 FT

Current Vessel Draft

Authorized draft of Ship Channel: 42 ft., with project to deepen to 52 ft underway.

All authorized drafts are subject to shoaling and other conditions which may result in vessel restrictions. Fendering systems available for additional draft. For current information contact the Harbor Master Office at (956) 831-8256.

DOCK NO. 1 GENERAL CARGO



LOCATION: North side of Turning Basin.

VESSEL DRAFT: 26.4 ft. nominal. • 10 ft. off dock special fendering: 31 ft.

DIMENSIONS: Length: 420 ft.; Width: 165 ft.; Height: 14 ft. 8 in.

SHED: 400 x 120 ft., steel construction, storage space: 46,250 sq. ft.

FLOOR AND APRONS: 650 lbs./sq. ft.

SHIPSIDE APRON: 35 ft. wide.

REAR APRON: 10 ft. wide.

RAIL ACCESS: Double depressed tracks adjacent to dock.

DOCK NO. 2 GENERAL CARGO



LOCATION: North side of Turning Basin.

VESSEL DRAFT: 25 ft. 5 in. nominal. • 10 ft. off dock special fendering: 30 ft.

DIMENSIONS: Length: 420 ft.; Width: 165 ft.; Height: 14 ft. 8 in.

PATIO/DOCK: 400 x 81 ft., steel construction; storage space: 32,400 sq. ft.

FLOOR AND APRONS: 650 lbs./sq. ft. capacity, concrete.

SHIPSIDE APRON: 74 ft. wide.

REAR APRON: 10 ft. wide.

RAIL ACCESS: Double depressed tracks adjacent to dock.

DOCK NO. 3 GENERAL CARGO



LOCATION: West side of Turning Basin.

VESSEL DRAFT: 32 ft. 5 in. nominal. • 10 ft. off dock special fendering: 32 ft. 5 in.

DIMENSIONS: Length: 440 ft.; Width: 165 ft.; Height: 14 ft. 8 in.

APRONS: 450 lbs./sq. ft. capacity, concrete

RAIL ACCESS: Double depressed tracks at rear adjacent to dock.

DOCK NO. 4 GENERAL CARGO



LOCATION: North side of Turning Basin

VESSEL DRAFT: 26 ft. nominal • 10 ft. off dock special fendering: 30 ft.

DIMENSIONS: Length: 420 ft.; Width: 165 ft.; Height: 14 ft. 8 in.

SHED: 340 x 120 ft., steel construction, storage space: 40,1800 sq. ft.

FLOOR AND APRONS: 650 lbs./sq. ft. capacity, concrete.

SHIPSIDE APRON: 35 ft. wide.

REAR APRON: 10 ft. wide.

RAIL ACCESS: Double depressed tracks adjacent to dock

DOCK NO. 7 GENERAL CARGO



LOCATION: North side of Turning Basin

VESSEL DRAFT: 23 ft. nominal • 10 ft. off dock special fendering: 25 ft.

DIMENSIONS: Length: 500 ft.; Width: 140 ft.; Height: 12 ft. 8 in.

SHED: 480 x 100 ft., steel construction, storage space: 47,795 sq. ft.

FLOOR AND APRONS: 500 lbs./sq. ft. capacity, concrete.

SHIPSIDE APRON: 30 ft. wide.

REAR APRON: 10 ft. wide.

RAIL ACCESS: Double depressed track adjacent to dock

DOCK NO. 8 GENERAL CARGO



LOCATION: North side of Turning Basin

VESSEL DRAFT: 23 ft. nominal • 10 ft. off dock special fendering: 25 ft.

DIMENSIONS: Length: 500 ft.; Width: 140 ft.; Height: 12 ft. 8 in.

SHED: 467 x 100 ft., steel construction, storage space: 46,700 sq. ft.

FLOOR AND APRONS: 500 lbs./sq. ft. capacity, concrete

SHIPSIDE APRON: 30 ft. wide

REAR APRON: 10 ft. wide

RAIL ACCESS: Double depressed track adjacent to dock

DOCK NO. 10 GENERAL CARGO



LOCATION: South side of Turning Basin

VESSEL DRAFT: 13 ft. 7 in, nominal • 10 ft. off dock special fendering: 17 ft. 1 in.

DIMENSIONS: Length: 650 ft.; Width: 280 ft.; Height: 12 ft.

APRON: 750 lbs./sq. ft. capacity, concrete

RAIL ACCESS: One apron track, two depressed tracks at rear

DOCK NO. 11 DEEP SEA-OPEN DOCK



LOCATION: South side of Turning Basin.

VESSEL DRAFT: 36 ft. nominal • 10 ft. off dock special fendering: 36 ft.

DIMENSIONS: Length: 626 ft.; Width: 280 ft.; Height: 12 ft.

PATIO/DOCK: 750 lbs./sq. ft. capacity, concrete.

RAIL ACCESS: Two shipside apron tracks

DOCK NO. 12 GENERAL CARGO



LOCATION: South side of Turning Basin

VESSEL DRAFT: 36 ft. nominal

DIMENSIONS: LENGTH: 550 ft.; Width: 280 ft.; Height: 12 ft.

SHED: 540 x 200 ft., steel construction, 100,000 sq. ft.

FLOOR AND APRONS: 750 lbs./sq. ft. capacity, concrete

SHIPSIDE APRON: 50 ft. wide

REAR APRON: 30 ft. wide **RAIL ACCESS:** Double railroad track on shipside apron; double depressed track on rear apron

DOCK NO. 13 GENERAL CARGO



LOCATION: South side of Turning Basin

VESSEL DRAFT: 34 ft. nominal • 10 ft. off dock special fendering: 34 ft.

DIMENSIONS: Length: 550 ft.; Width: 280 ft.; Height: 12 ft.

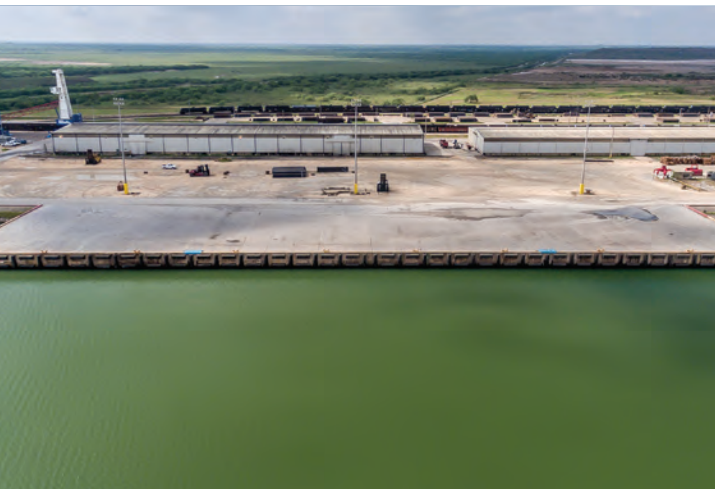
SHED: 470 x 200 ft., steel construction, 100,000 sq. ft.

FLOOR AND APRONS: 750 lbs./sq. ft.

SHIPSIDE APRON: 50 ft. wide

REAR APRON: 30 ft. wide **RAIL ACCESS:** Double railroad track on shipside apron; double depressed track on rear apron.

DOCK NO. 15 (HEAVY/MULTI-PURPOSE OPEN DOCK)



PORT CRANES AVAILABLE: (2)-125MT Gottwald Harbor Cranes
(1)-110MT Gottwald Harbor Crane

LOCATION: Southside of Channel 1 mile east of the Turning Basin

VESSEL DRAFT: 39 ft. nominal **DIMENSIONS:** Length: 600 ft.; Width: 145 ft.; Height: 12 ft.

SHEDS: 15 WEST: 120 x 850 = 102,000 sq. ft./Steel construction 15 EAST: 120 x 500 = 60,000 sq. ft./Steel construction with two overhead cranes with 30 short ton capacity.

FLOORS AND APRON: 2,500 lbs./sq. ft. capacity, concrete.

RAIL ACCESS: Two-rail track siding along warehouse.

STORAGE: 4.1 acres of improved open storage and directly adjacent to dock.

DOCK NO. 16 (HEAVY/MULTI-PURPOSE OPEN DOCK)



PORT CRANES AVAILABLE: (2)-125MT Gottwald Harbor Cranes
(1)-110MT Gottwald Harbor Crane

LOCATION: South side of Turning Basin Extension

VESSEL DRAFT: 39 ft. nominal

DIMENSIONS: Length: 600 ft.; Width: 145 ft.; Height: 12 ft.

FLOORS AND APRON: 2,500 lbs./sq. ft. capacity, concrete

RAIL ACCESS: Two, behind patio

STORAGE: 4.0 acres of improved open storage and directly adjacent to dock

LIQUID CARGO DOCK



LOCATION: South side of Ship Channel 1 ½ miles east of Turning Basin

VESSEL DRAFT: 39 ft. nominal • 10 ft. off dock special fendering: 39 ft.

CENTRAL PLATFORM: 30 x 60 ft.

CONSTRUCTION: Concrete and steel “H” pilings, four breasting dolphins each 23 x 25 ft.

LIQUID CARGO DOCK 1



LOCATION: South side of Turning Basin

VESSEL DRAFT: 13 ft. 7 in. nominal • 10 ft. off dock special fendering: 17 ft. 1 in.

DIMENSIONS: Length: 650 ft.; Width: 280 ft.; Height: 12 ft.

APRON: 750 lbs./sq. ft. capacity, concrete.

RAIL ACCESS: One apron track, two depressed tracks at rear.

LIQUID CARGO DOCK 2



LOCATION: North side of Turning Basin Extension

VESSEL DRAFT: 27 ft. nominal. • 10 ft. off dock special fendering: 32 ft.

DIMENSIONS: Length: 420 ft. O.A., 120 ft. pier; Height: 14.8 ft.

CONSTRUCTION: Pile and timber “T” head; steel pipe pile dolphins

EQUIPMENT: Hydraulic hose handling cranes

LIQUID CARGO DOCK 3



LOCATION: North side of Ship Channel 1 ¼ miles east of Turning Basin
VESSEL DRAFT: 39 ft. nominal. • 10 ft. off dock special fendering: 38 ft.
DIMENSIONS: Length: 420 ft. O.A., 120 ft. pier; Height: 14.8 ft.
CONSTRUCTION: Pile and timber “T” head; concrete breasting unit
EQUIPMENT: Hydraulic hose handling cranes

LIQUID CARGO DOCK 5



LOCATION: North side of Ship Channel ¾ mile east of Turning Basin
VESSEL DRAFT: 39 ft. nominal
LENGTH: Slip: 1,100 ft.
DOCK: 109 ft. (between moorings: 220 ft.; Height: 16 ft. 6 in.)
CONSTRUCTION: Reinforced concrete
EQUIPMENT: A hydraulic hose handling cranes

LIQUID CARGO DOCK 6



LOCATION: North side of Ship Channel 1 mile east of Turning Basin
VESSEL DRAFT: 39 ft. nominal
LENGTH: Slip: 1,345 ft.
DOCK: 109 ft. (between moorings: 324 ft.; Height: 16 ft. 6 in.)
CONSTRUCTION: Reinforced concrete
EQUIPMENT: Hydraulic hose handling cranes

FISHING HARBOR



LOCATION: Four miles east of Turning Basin north of Ship Channel

VESSEL DRAFT: 14 ft. minimal

DOCKS: 8,657 linear ft. of marginal docks

CONSTRUCTION: Pile and timbers

BULK CARGO DOCK/GRAIN ELEVATOR



LOCATION: South side of approach to Turning Basin Extension

VESSEL DRAFT: 39 ft. nominal. • 10 ft. off dock special fendering: 39 ft.

DIMENSIONS: Length: 400 ft.; Apron: 43 ft.; Height: 12 ft.

CONSTRUCTION: Steel pile, concrete deck

HEIGHT OF FLAT HOUSES: Three flat houses each measuring 100 x 320 ft.

TOTAL CAPACITY: 3,000,000 bushels of grain

- 1,000,000 bushels concrete elevator
- 1,000,000 bushels flat house
- 500,000 bushels flat house
- 500,000 bushels flat house

EQUIPMENT: Two 25,000 bushels per hour Buhler gantries; trimmer and spoons; reversible conveyors.

BUSINESS DIRECTORY

BUSINESS DIRECTORY INDEX

AIR CONDITIONING & REFRIGERATION	45
AIRPORT OPERATORS	45
ARCHITECTS & ENGINEERS	45
ASSOCIATIONS & CLUBS	45
ATTORNEYS	45
AUTOMOTIVE SERVICES	45
BANKS	45
BARGE COMPANIES	46
BROWNSVILLE NAVIGATION DISTRICT BOARD OF COMMISSIONERS	46
BUNKERING	47
CHAMBERS OF COMMERCE	47
CONSTRUCTION, GENERAL	47
CONSTRUCTION, MARINE	48
CONSULATES	48
CONSULTANTS, MARINE	48
CONTAINERS	48
CRANE SERVICES & RIGGING	48
CUSTOMS BROKERS, U.S. LICENSED	49
DIVERS & MARINE SALVAGERS	49
ECONOMIC DEVELOPMENT	49
ELECTRICAL SERVICES	50
ELECTRONICS, MARINE	50
ENGINEERING, MARINE	50

ENVIRONMENTAL & GEOTECHNICAL ENGINEERING	50
ENVIRONMENTAL CLEANUP	51
EQUIPMENT & SUPPLIES, MARINE	51
EXPORT PACKING & RIGGING	51
FOREIGN TRADE ZONE	51
FREIGHT FORWARDERS	52
GOVERNMENTAL AGENCIES	52
GRAIN ELEVATOR	52
HARBOR MASTER OFFICE	52
HIGHER EDUCATION INSTITUTIONS	52
HOTELS	53
INSURANCE, CARGO	53
INSURANCE, MARINE	53
LABOR ORGANIZATIONS	53
LINE HANDLERS	53
MACHINING & FABRICATING	53
MINERALS	53
MISCELLANEOUS	53
PILOTAGE	55
PIPELINE OPERATORS	55
PORT AUTHORITY ATTORNEY	55
PORT OF BROWNSVILLE ADMINISTRATION	55
PUBLIC SCALES	56
RAIL CARRIERS/SERVICE	56
RECYCLING	56
SERVICES, MARINE	57
SERVICES, SECURITY	57
SHIP REPAIR/RECYCLING	57
SHIPPING AGENTS	58
STEVEDORES	58
SURVEYORS, MARINE	58
TERMINAL OPERATORS, LIQUID BULK	58
TOWING, TUG	59
TRANSLOAD FACILITY	59
TRUCKING	59
UTILITY COMPANIES	59
VESSEL FUELING COMPANIES	59
WAREHOUSING & STORAGE	59
FISHING HARBOR	59

AIR CONDITIONING & REFRIGERATION

Halff Associates Inc.

1075 Paredes Line Road, Suite B
Brownsville, TX 78521
(956) 303-7100
jclint@halff.com
www.halff.com

Quantum-Mechanical Contractors LLC.

2705 E. Davis Road, Suite A
Edinburg, TX 78542
(956) 513-1849
quantum.mcon@gmail.com

AIRPORT OPERATORS

Brownsville South Padre Island International Airport

700 Amelia Earhart Drive
Brownsville, TX 78521
(956) 542-4373
flybrownsville@brownsvilletx.gov
www.flybrownsville.com

ARCHITECTS & ENGINEERS

Halff Associates Inc.

1075 Paredes Line Road, Suite B
Brownsville, TX 78521
(956) 303-7100
jclint@halff.com
www.halff.com

HDR Engineering Inc.

555 N. Carancahua, Suite 1600
Corpus Christi, TX 78401-0850
(361) 696-3300 Fax: (361) 696-3385
jeffrey.massengill@hdrinc.com
www.hdrinc.com

Intertek-PSI

2020 North Loop 499, Suite 302
Harlingen, TX 78550
(956) 423-6826 Fax: (956) 423-5735
raymundo.martinez@intertek.com
www.intertek.com/building

MEG Engineers

1221 E. Tyler Ave. Harlingen, TX 78550
(956) 702-8500 Fax: (956) 702-4180
meg@megengineers.com
www.megengineers.com

Mejia & Rose Inc.

1643 W. Price Road
Brownsville, TX 78520
(956) 544-3022 Fax: (956) 544-3068
mandrinc@cngmail.com
www.mejiarose.com

Raba Kistner

1244 Robinhood Drive, Suite 101
Brownsville, TX 78521
(956) 504-9777
iarjona@rkci.com
www.rkci.com

RO Engineering, PLLC.

2705 E. Davis Road, Suite A
Edinburg, TX 78542
(956) 513-1849
r.olivarez@ro-engineering.com
www.ro-engineering.com

portofbrownsville.com

Terracon Consultants Inc.

1506 Mid Cities Drive
Pharr, TX 78577
(956) 283-8254 Fax: (956) 283-8279
stephanie.cardoza@terracon.com
www.terracon.com

ASSOCIATIONS & CLUBS

American Association of Port Authorities (AAPA)

1010 Duke St.
Alexandria, VA 22314-3589
(703) 684-5700 Fax: (703) 684-6321
info@aapa-ports.org
www.aapa-ports.org

Brownsville Licensed U.S. Customs Brokers Association

400 E. 13th St.
Brownsville, TX 78520
(956) 546-5544 Fax: (956) 546-0276
rroser@rosercustoms.com

Friends of Rio Grande Valley Reef Inc.

419 W. Hwy. 83
Pharr, TX 78577
(956) 433-9783
www.rgvreef.org

International Seafarer Center

220 W. Windhaus Road
Brownsville, TX 78521
(956) 831-4321
palbro05@gmail.com
www.brownsvilleaseafarer.com

Rio Grande Council Boy Scouts

P. O. Box 2424
Harlingen, TX 78551
(956) 423-0250 Fax: (956) 421-4950
rudygonzalez@scouting.org
www.riograndecouncil.org

Texas Ports Association

P.O. Box 2562
Houston, TX 77252
(713) 670-2482 Fax: (713) 670-2429
rguenther@poha.com
www.texasports.org

Texas Shrimp Association

1000 Everglades Road
Brownsville, TX 78521
(956) 831-6550 Fax: (956) 831-6557
www.texasshrimpassociation.org

West Gulf Maritime Association (WGMA)

1717 E. Loop North, Suite 200
Houston, TX 77029
(713) 678-7655 Fax: (855) 715-1717
www.wgma.org

ATTORNEYS

Law Office of Santiago Galarza

50 E. Elizabeth St.
Brownsville, TX 78520
(956) 982-1984
Fax: (956) 982-2499
santiago@galarzalaw.net

Philip T. Cowen CHB

500 E. Levee St. Brownsville, TX 78520
(956) 541-6031 Fax: (956) 541-6872
ptchb@att.net

Rentfro, Irwin & Irwin Law Firm PLLC

1650 Paredes Line Road Suite 102
Brownsville, TX 78521
(956) 542-4329 Fax: (956) 542-4320
info@rentfrolawfirm.net
www.rentfrolawfirm.net

Sanchez, Whittington, Wood & Dijkman LLC

3505 Boca Chica Blvd.
Brownsville, TX 78521
(956) 546-3731

AUTOMOTIVE SERVICES

Diesel Fuel Injection Inc.

6918 Padre Island Hwy.
Brownsville, TX 78521
(956) 831-4744 Fax: (956) 831-9473
pmiddlediesel@gmail.com

Nuga Diesel Truck and Trailer Parts

2951 N. Indiana Ave.
Brownsville, TX 78521
(956) 541-7169 Fax: (956) 541-7317
tnunez@nugadiesel.com
www.nugadiesel.com

BANKS

Bank of America

2635 Boca Chica Blvd.
Brownsville, TX 78521
(956) 544-6839
www.bankofamerica.com

Chase Bank

2300 Boca Chica Blvd.
Brownsville, TX 78521
(956) 982-7606
www.chase.com

First Community Bank

470 Morrison Road
Brownsville, TX 78526
(956) 547-5100
www.fcbweb.net

First Convenience Bank

2155 Paredes Line Road
Brownsville, TX 78521
(956) 504-2000
www.1stcb.com

Frost Bank

5480 Paredes Line Road
Brownsville, TX 78526
(956) 554-6301
www.frostbank.com

IBC Bank

1600 Ruben Torres Blvd.
Brownsville, TX 78526
(956) 547-1000 Fax: (956) 547-1028
www.ibc.com

Lone Star National Bank

3100 North Indiana Ave.
Brownsville, TX 78521
www.lonestarnationalbank.com

BUSINESS DIRECTORY

PlainsCapital Bank

25 E. Price Road
Brownsville, TX 78521
(956) 554-7100
www.plainscapital.com

Texas Community Bank

3505 Boca Chica Blvd. #109
Brownsville, TX 78521
(956) 542-7333
www.tx-communitybank.com

Valley Federal Credit Union

183 E Price Road
Brownsville, TX 78521
(956) 546-3108 Fax: (956) 544-5404
www.vfcu.net

Vantage Bank Texas

1785 Ruben M. Torres Blvd.
Brownsville, TX 78521
(956) 574-8500
www.inbweb.com

BARGE COMPANIES

American Commercial Barge Line

1701 E. Market St.
Jeffersonville, IN 47130
(800) 457-6377
www.bargeacbl.com

American River Transportation Company

10400 River Road
Ama, LA 20031
(504) 431-1488
www.adm.com

Argosy Fleetng & Logistics

3118 Harrisburg Blvd.
Houston, TX 77003
(713) 668-3388
www.argosyfleetng.com

Canal Barge

835 Union St.
New Orleans, LA 70112-1469
(504) 581-2424 Fax: (504) 584-1505
www.canalbarge.com

Celtic Marine and Logistics

3888 Sherwood Forest Blvd.
Baton Rouge, LA 70816
(225) 752-2490 Fax: (225) 752-2582
www.celticmarine.com

Heartland Barge

1007 N. Main St.
Columbia, IL 62236
(314) 304-6688 Fax: (618) 281-4545
willie.thomassee@hl-companies.com
www.hl-barge.com

Ingram Barge Line

4400 Harding Pike
Nashville, TN 37205
(615) 298-8200
www.ingrambarge.com

Iron Mike Marine Inc.

25 Hawser Bend Road
Los Fresnos, TX 78566
(956) 778-5906
imm1998@aol.com

Kirby Corporation

55 Waugh Drive, Suite 1000
Houston, TX 77007-1745
(713) 435-1000 Fax: (713) 435-1010
www.kirbycorp.com

LeBeouf Brothers Towing Company

124 Dry Dock Road
Bourg, LA 70343
(985) 594-6691 Fax: (985) 594-5253
www.lebeouftowing.com

Parker Towing

1001 Third St.
Tuscaloosa, AL 35402
(205) 349-1677 Fax: (205) 758-0061
www.parkertowing.com

Signet Maritime Corporation

7400 Foust Road
Brownsville, TX 78521
(956) 838-6800 Fax: (956) 838-6801
www.signetmaritime.com

Kuehne + Nagel

15855 Diplomatic Plaza
Houston, TX 77032
(281) 449-8888
www.kuehne-nagel.com

BROWNSVILLE NAVIGATION DISTRICT BOARD OF COMMISSIONERS

Esteban Guerra, Chairman

1000 Foust Road
Brownsville, TX 78521
(956) 831-4592 Fax: (956) 831-5006
www.portofbrownsville.com

BROWNSVILLE LICENSED U.S. CUSTOMS BROKERS ASSOCIATION



MEMBERS

C&J LOGISTICAL SERVICES, INC.

JORGE A. TORRES DBA INTERLINK TRADE SERVICES
DANIEL B. HASTINGS, INC.
PARKER & COMPANY
PHILIP T. COWEN, CHB
PORT OF BROWNSVILLE

LOERA CUSTOMS BROKERAGE, INC.

LIVINGSTON INTERNATIONAL
NAVCO LOGISTICS
RARE IMPORT-EXPORT, LLC.
BORDER CUSTOMS SERVICE
RICARDO GONZALEZ CUSTOMS BROKER, LLC.

ROSER & J. COWEN LOGISTICAL CUSTOMS SVC LTD.

ROSER CUSTOMS SERVICE, INC.
MATTHEW J. LEYENDECKER, SCS
H. SAENZ JR., INC.
TCS BROKERAGE
HEMA LOGISTICS, LLC.

USMCA Port of Brownsville Servicing All Modes of Transportation On the Border, By the Sea

Ralph Cowen, Vice Chairman

1000 Foust Road
Brownsville, TX 78521
(956) 831-4592 Fax: (956) 831-5006
ralphcowen@icloud.com
www.portofbrownsville.com

John Wood, Secretary of the Board

1000 Foust Road
Brownsville, TX 78521
(956) 831-4592 Fax: (956) 831-5006
jwarealty@aol.com
www.portofbrownsville.com

John Reed, Commissioner

1000 Foust Road
Brownsville, TX 78521
(956) 831-4592 Fax: (956) 831-5006
jreed37762@aol.com
www.portofbrownsville.com

Sergio Tito Lopez, Commissioner

1000 Foust Road
Brownsville, TX 78521
(956) 831-4592 Fax: (956) 831-5006
stlopezjr@gmail.com
www.portofbrownsville.com

BUNKERING**Oil Patch Fuel & Supply Inc.**

1905 Bayou Court
Brownsville, TX 78521
(956) 831-4839
frank@oilpatchfuelsupply.com
www.oilpatchfuelsupply.com

PMI Service North America Inc.

909 Fannin St.
Houston, TX 77010
(713) 567-0189
dtolfson@pmicim.com

CHAMBERS OF COMMERCE**Alamo Chamber of Commerce**

803 Main St.
Alamo, TX 78516
Tel (956) 787-2117
alamotx.chamber@gmail.com
www.alamochamber.com

Alton Chamber of Commerce

509 S. Alton Blvd. Alton, TX 78573
(956) 432-0730 Fax: (956) 432-0766
chamber@altontx.gov
www.alton-tx.gov/chamber-of-commerce

Brownsville Chamber of Commerce

1600 W. University Blvd.
Brownsville, TX 78520
(956) 542-4341 Fax: (956) 504-3348
info@brownsvillechamber.com
www.brownsvillechamber.com

Edinburg Chamber of Commerce

602 W. University Drive
Edinburg, TX 78539
(956) 383-4974 Fax: (956) 383-6942
chamber@edinburg.com
www.edinburg.com

portofbrownsville.com

Harlingen Area Chamber of Commerce

311 E. Tyler Ave.
Harlingen, TX 78550
(956) 423-5440 Fax: (956) 425-3870
info@harlingen.com
www.harlingen.com

La Feria Chamber of Commerce

126-A East Commercial Avenue
La Feria, TX 78559
(956) 277-0601
laferiachamberofcommerce@gmail.com
www.laferiachamber.com

Los Fresnos Chamber of Commerce

520 E. Ocean Blvd.
Los Fresnos, TX 78566
(956) 233-4488
office@losfresnoschamber.com
www.losfresnoschamber.com

McAllen Chamber of Commerce

1200 Ash Ave.
McAllen, TX 78501
(956) 682-2871 Fax: (956) 687-2917
steve@mcallenchamber.com
www.mcallen.org

Mercedes Chamber of Commerce

320 S. Ohio Ave.
Mercedes, TX 78570
(956) 565-2221 Fax: (956) 432-0766
www.mercedeschamber.com

Mission Chamber of Commerce

202 W. Tom Landry Road
Mission, TX 78572
(956) 585-2727
gmcc@missionchamber.com
www.missionchamber.com

Palmview Chamber of Commerce

400 W. Veterans Blvd.
Palmview, TX 78572
(956) 862-3257
palmviewchamber@gmail.com
www.palmviewchamber.com

Port Isabel Chamber of Commerce

421 Queen Isabella Blvd.
Port Isabel, TX 78578
(956) 943-2262 Fax: (956) 943-4001
director@portisabel.org
www.portisabelchamber.com

RGV Partnership

322 S. Missouri Ave. Weslaco, TX 78596
(956) 968-3141 Fax: (956) 968-0210
info@rgvpartnership.com
www.rgvpartnership.com

Raymondville Chamber of Commerce

700 FM 3168
Raymondville, TX 78580
(956) 689-1860 Fax: (956) 689-1863
chamber@granderiver.net

Roma Chamber of Commerce

77 Convent Avenue
Roma, TX 78584
(956) 849-4296
lsandoval@cityofroma.net

San Benito Chamber of Commerce

223 S. Sam Houston Blvd.
San Benito, TX 78586
(956) 361-9111
info@chamberofsanbenito.com
www.chamberofsanbenito.com

South Padre Island Chamber of Commerce

610 Padre Blvd.
South Padre Island, TX 78597
(956) 761-4412 Fax: (956) 761-2739
info@spichamber.com
www.spichamber.com

Weslaco Area Chamber of Commerce

275 S. Kansas, Suite B.
Weslaco, TX 78596
(956) 968-2102 Fax: (956) 968-6451
chamber@weslaco.com
www.weslaco.com

CONSTRUCTION, GENERAL**Aguaworks Pipe & Supply LLC**

2907 N. Central Ave.
Brownsville, TX 78526
(956) 831-2500 Fax: (956) 831-2525
thomas.bennett@aguaworkspipe.com
www.aguaworkspipe.com

Alamo Concrete Products Ltd.

600 Yard Road
Brownsville, TX 78521
(210) 208-1570
ap@alamoconcrete.com

Bryant Industrial Services LLC

2600 Callaway Drive
Brownsville, TX 78521
(956) 838-5120 Fax: (956) 761-1255
www.bryantindustrialservices.com

Bougambillas Construction LLC

1775 Central Blvd Suite B
Brownsville, TX 78520
(956) 541-1390
bugconst@gmail.com
www.bougambillasconstruction.com

CEMEX Construction Materials

3600 N. Chemical Road
Brownsville, TX 78521
(956) 386-1452
www.cemexusa.com

G & T Paving LLC

2005 Mercedes Road
Brownsville, TX 78520
(956) 546-3673 Fax: (956) 546-5333
gpavingco@gmail.com
www.gntpaving.com

Gallegos Electric Inc.

5640 Cavazos Road
Brownsville, TX 78526
(956) 542-0058 Fax: (956) 548-1392
gallegoselectricinc@gmail.com
www.gallegoselectricinc.com

Holt CAT

10701 N. Highway 281
Edinburg, TX 78541
(956) 292-7900
www.holtcat.com

BUSINESS DIRECTORY

Koncept Safety

7846 Fortune Drive
San Antonio, TX 78250
(210) 521-1980 Fax: (210) 684-5005
sales@konceptsafty.com
www.konceptsafty.com

Magic Valley Concrete LLC

6265 FM 511
Brownsville, TX 78521
(956) 580-2502
rufino@riovalleypipe.com
www.mvconcrete.com

Renoworks LLC.

2705 E. Davis Road, Suite A
Edinburg, TX 78542
(956) 513-1849
rene@renoworks.com

RM Walsdorf Inc.

4501 Bill Reed Rd
Brownsville, TX 78521
(956) 831-3984 Fax: (956) 831-4923
kim@rmwalsdorf.com

Raba Kistner

1244 Robinhood Drive, Suite 101
Brownsville, TX 78521
(956) 504-9777
www.rkci.com

Terracon Consultants Inc.

1506 Mid Cities Drive
Pharr, TX 78577
(956) 283-8254 Fax: (956) 283-8279
stephanie.cardoza@terracon.com
www.terracon.com

Vulcan Construction Materials LP

10905 R.L. Ostos Road
Brownsville, TX 78521
(956) 831-8888
farrard@vmcmail.com
www.vulcanmaterials.com

ZIWA Corporation

1952 S. Price Road
Brownsville, TX 78526
(956) 542-8167 Fax: (956) 986-2775
sales@ziwacorporation.com
www.ziwacorporation.com

CONSTRUCTION, MARINE

BC Equipment Sales Inc.

201 E. Expressway 83
La Feria, TX 78559
(956) 379-8664 or (956) 797-0072
rvela@bc-equipment.com
www.bcequipment.com

Bryant Industrial Services LLC

2600 Callaway Drive
Brownsville, TX 78521
(956) 838-5120 Fax: (956) 761-1255
bryantindustrial@yahoo.com
www.bryantindustrialservices.com

Conroe Wood Products Inc.

300 E. Stewart St.
Willis, TX 77378
(888) 636-3098 Fax: (936) 760-2975
www.conroewoodproducts.com

Epoxy Design Systems Inc.

5805 Centralcrest St., Suite A
Houston, TX 77092
(713) 461-8733 Fax: (281) 856-9909
hank@epoxydesign.com
www.epoxydesign.com

Holt CAT

10701 N. Highway 281
Edinburg, TX 78541
(956) 292-7900
www.holtcat.com

Seatrium AmFELS Inc.

20000 State Hwy. 48
Brownsville, TX 78521
(956) 831-8220 Fax: (956) 831-6220
www.seatrium.com

SA Recycling/SteelCoast

16200 Joe Garza Sr. Road
Brownsville, TX 78521
(956) 509-2031 Fax: (956) 435-0068
reception@sarecycling.com
www.sarecycling.com

CONSULATES

British Consulate-General Houston

1301 Fannin, Suite 2400
Houston, TX 77002
(713) 210-4000
www.gov.uk/government/world/
organisations/british-consulate-
general-houston

French Consulate-General Houston

777 Post Oak Blvd., Suite 600
Houston, TX 77056-3252
(346) 272-5363
info.houston.fslt@diplomatie.gouv.fr
https://houston.consulfrance.org

Mexican Consulate General Brownsville

301 Mexico Blvd, Suite F-2
Brownsville, TX 78520
(956) 542-4431
Fax: (956) 542-7267
conbrownsville@sre.gob.mx
https://consulmex.sre.gob.mx/
brownsville

Royal Danish Consulate Williams Tower

2800 Post Oak Blvd, Suite 1910
(713) 622-9018 Fax: (713) 275-0779
hougkl@um.dk
www.usa.um.dk

CONSULTANTS, MARINE

Brownsville Gulfside Warehouse Inc.

400 R.L. Ostos Road
Brownsville, TX 78521
(956) 831-4241 Fax: (956) 831-2200
rsarquis@brownsvillegulfside.com
www.dixshipping.com

HDR Engineering Inc.

555 N. Carancahua, Suite 1600
Corpus Christi, TX 78401-0850
(361) 696-3300 Fax: (361) 696-3385
www.hdrinc.com

CONTAINERS

Kuehne + Nagel

15450 Diplomatic Plaza
Houston, TX 77032
(281) 449-8888
jim.mcneille@kuehne-nagel.com
www.kuehne-nagel.com

Mediterranean Shipping Company (MSC)

420 5th Ave. (at 37th St.), 8th floor
New York, NY 1008-2702
(212) 764-4800
www.msc.com

Terrier Transportation

4708 Fidelity
Houston, TX 77029
(956) 831-9954 Fax: (956) 831-9958
mary.rivera@terriertran.com
www.terriertran.com

CRANE SERVICES & RIGGING

All Star Metals LLC

101 Box Car Road
Brownsville, TX 78521
(956) 838-2110 Fax: (956) 838-2190
www.allstarmetals.com

BC Equipment Sales Inc.

201 E. Expressway 83
La Feria, TX 78559
(956) 379-8664 or (956) 797-0072
rvela@bc-equipment.com
www.bcequipment.com

Brownsville Gulfside Warehouse Inc.

400 R.L. Ostos Road
Brownsville, TX 78521
(956) 831-4241 Fax: (956) 831-2200
rsarquis@brownsvillegulfside.com
www.dixshipping.com

Dix Shipping Company Inc.

5500 R.L. Ostos Road
Brownsville, TX 78521
(956) 831-4228 Fax: (956) 831-8559
lostos@dixshipping.com
www.dixshipping.com

Seatrium AmFELS Inc.

20000 State Hwy. 48
Brownsville, TX 78521
(956) 831-8220 Fax: (956) 831-6220
www.seatrium.com

Kuehne + Nagel

15450 Diplomatic Plaza
Houston, TX 77032
(281) 449-8888
jim.mcneille@kuehne-nagel.com
www.kuehne-nagel.com

Plitt Crane & Rigging

2601 R.L. Ostos Road
Brownsville, TX 78521
(956) 831-4278 Fax: (956) 831-9626
www.plittrigging.com

Special Crane Services LLC

2601 N. Indiana Road
Brownsville, TX 78521
(956) 592-4469
roxmonsivais@hotmail.com

CUSTOMS BROKERS, U.S. LICENSED

Border Customs Service

1280 Cheers Blvd.
Brownsville, TX 78521
(956) 548-0311 Fax: (956) 838-0107
slopez@bordercustoms.com
www.bordercustoms.com

C & J Logistical Services Inc.

1921 Anei Circle, Suite D
Brownsville, TX 78577
(956) 214-5050 Fax: (956) 214-5055
cnflores@cjlogistical.com
www.cjlogistical.com

DSV Air & Sea Inc.

1350 Cheers Blvd.
Brownsville, TX 78521
(956) 831-4222 Fax: (956) 831-2704
olga.garcia@us.dsv.com
www.us.dsv.com

Daniel B. Hastings Inc.

3301 Nafta Parkway, Suite B
Brownsville, TX 78526
(956) 831-7555 Fax: (956) 831-7562
sandrag@dastings.com
www.dastings.com

Livingston International

594 S. Vermillion Road
Brownsville, TX 78521
(956) 504-6440 Fax: (956) 504-2665
jmartinez@livingstonintl.com
www.livingstonintl.com

Loera Customs Brokerage

5845 E. 14th St.
Brownsville, TX 78521
(956) 831-9000 Fax: (956) 831-4103
minerva@loeracbi.com
www.loeracbi.com

Matthew J. Leyendecker

2700 R.L. Ostos Road
Brownsville, TX 78521
(956) 504-1700 Fax: (956) 369-5320
matt@leyendeckerscs.com
www.leyendeckerscs.com

NAVCO Logistics

2500 Courage Blvd.
Brownsville, TX 78521
(956) 542-4138 Fax: (956) 544-2139
jgriffin@navcologistics.com
www.navcologistics.com

Parker & Company

4694 Jaime Zapata Ave.
Brownsville, TX 78521
(956) 831-2000 Fax: (956) 831-4140
fparker@parker-logistics.com
www.parkerandcompany.com

Philip T. Cowen CHB

500 E. Levee St. Brownsville, TX 78520
(956) 541-6031 Fax: (956) 541-6872
ptchb@att.net

Port of Brownsville/Foreign Trade Zone No. 62

1000 Foust Road Brownsville, TX 78521
(956) 831-4592 Fax: (956) 831-5006
trodriguez@portofbrownsville.com
www.portofbrownsville.com

portofbrownsville.com

RARE Import-Export LLC

1705 Billy Mitchell Blvd.
Brownsville, TX 78521
(956) 504-3133 Fax (956) 541-8282
apriladelgado@rareimport-exportlogistics.com
www.rareimport-exportlogistics.com

Ricardo Gonzalez Customs Broker LLC

7620 Victoria Court, Suite 2
Brownsville, TX 78521
(956) 831-9651 Fax: (956) 831-2740
rgonzalez@itsbrownsville.com
www.itsbrownsville.com

Roser & Cowen Logistical Customs Service LTD

4695 Towerwood Dr.
Brownsville, TX 78521
(956) 831-8533 Fax: (956) 831-8615
nroser@rosercowen.com
www.rosercowen.com

Roser Customs Service Inc.

400 E. 13th St.
Brownsville, TX 78520
(956) 546-5544 Fax: (956) 546-0276
rroser@rosercustoms.com
www.rosercustoms.com

TCS Brokerage

174 Industrial Dr.
Brownsville, TX 78521
(956) 544-4575 Fax: (956) 544-6950
martha@tcsbrokerage.com
www.tcsbrokerage.com

Transcontinental Distribution Services Inc.

2380 N. Indiana Ave.
Brownsville, TX 78521
(956) 832-0773 Fax: (956) 832-0838
ltltrfbro@transmaritime.com
www.transcontinentalinc.com

DIVERS & MARINE SALVAGERS

All Star Metals LLC

101 Box Car Rd. Brownsville, TX 78521
(956) 838-2110 Fax: (956) 838-2190
www.allstarmetals.com

Marine Salvage & Services Inc.

416 W. South Shore Drive
Port Isabel, TX 78578
(956) 943-2648 Fax: (956) 943-4516
billy@marineservice.us
www.marineservice.us

ECONOMIC DEVELOPMENT

Alamo Economic Development Corporation

715 U.S. Business 83 Alamo, TX 78516
(956) 787-6622 Fax: (956) 787-7766
www.alamoedc.org

Brownsville Community Improvement Corporation

1304 East Adams Street
Brownsville, TX 78520
(956) 382-7500
www.brownsvilledc.org

Donna Economic Development Corporation

127 S. Eighth St. Donna, TX 78537
(956) 998-7233
www.cityofdonna.org

Edinburg Economic Development Corporation

415 W. University Dr. Edinburg, TX 78541
(956) 388-8207 Fax: (956) 380-2738
www.cityofedinburg.com/economic_development/

Elsa Economic Development Corporation

102 S. Diana St.
Elsa, TX 78543
(956) 262-2127 Fax: (956) 262-5002
www.elsa@cityofelsa.net

Greater Brownsville Incentives Corporation (GBIC)

500 E. Charles St.
Brownsville, TX 78520
(956) 561-4133
www.greaterbrownsville.com

Harlingen Economic Development Corporation

2424 Boxwood St., Suite 125
Harlingen, TX 78550
(956) 216-5081 Fax: (956) 216-2580
www.harlingenedc.com

La Feria Economic Development Corporation

115 E. Commercial Ave.
La Feria, TX 78559
(956) 797-2261 Fax: (956) 797-1899
www.cityoflaferia.com

La Joya Economic Development Corporation

701 E. Expressway 83
La Joya, TX 78560
(956) 581-7002 Fax: (956) 580-7000
www.cityoflajoya.com

McAllen Economic Development Corporation

6401 S. 33rd St.
McAllen, TX 78503
(956) 682-2875 Fax: (956) 382-3077
www.mcallenedc.org

Development Corporation of Mercedes

320 S. Ohio Ave.
Mercedes, TX 78570
(956) 565-2230
www.mercedesedc.com

Mission Economic Development Corporation

801 N. Bryan Road
Mission, TX 78572
(956) 585-0040
www.missionedc.com

Pharr Economic Development Corporation

1215 S. Cage Blvd.
Pharr, TX 78577
(956) 402-4332 Fax: (956) 475-3449
www.pharredc.com

BUSINESS DIRECTORY

Port of Brownsville

1000 Foust Road
Brownsville, TX 78521
(956) 831-4592 or 800-978-5395
www.portofbrownsville.com

RGV Partnership

322 S. Missouri Ave.
Weslaco, TX 78596
(956) 968-3141 Fax: (956) 968-0210
www.rgvpartnership.com

Raymondville Economic Development Corporation

700 FM 3168 Raymondville, TX 78580
(956) 689-1860 Fax: (956) 689-1863
www.raymondvilletx.us

Rio Grande City Economic Development Corporation

5332 E. U.S. Hwy. 83, Ste. B
Rio Grande City, TX 78582
(956) 487-3476 Fax: (956) 317-1580
www.rgcedc.com

San Benito Economic Development Corporation

701 North Bowie Street,
San Benito, TX 78586
(956) 361-3800 Ext. 304
Fax: (956) 361-3805
www.sanbenitoedc.us

San Juan Economic Development Corporation

905 W. First St. Ste. D
San Juan, TX 78537
(956) 516-3897 Fax: (956) 685-0139
www.sanjuanedc.com

South Padre Island Economic Development Corporation

6801 Padre Island Blvd.
South Padre Island, TX 78597
(956) 761-6805 Fax: (956) 761-4523
www.southpadreislandedc.com

Sullivan City Economic Development Corporation

500 S. Cenizo Sullivan City, TX 78595
(956) 485-2828 Fax (956) 485-9551

Texas Economic Development Corporation

P.O. Box 684702
Austin, TX 78711-2428
(512) 981-6736 Fax: (512) 936-0080
www.businessintexas.com

Weslaco Economic Development Corporation

275 S. Kansas Ave., Suite A
Weslaco, TX 78596
(956) 969-0838
weslacoedc@gmail.com
www.weslacoedc.com

ELECTRICAL SERVICES

AEP Texas

355 W. Hwy. 77 San Benito, TX 78586
(956) 361-2088 Fax : (956) 361-2090
dlucio@aep.com
www.aeptexas.com

AP Sensing Americas LP

13280 NW Freeway, Suite F, #355
Houston, TX 77040
(281) 304-0128
Fax: (281) 256-2392
rich.holeman@apsensing.com
www.apsensing.com

Brownsville Public Utilities Board (BPUB)

1425 Robinhood Drive
Brownsville, TX 78521
(956) 982-6100 Fax: (956) 983-6289
www.brownsville-pub.com

Magic Valley

Electric Cooperative
1 ¾ Mi W. Hwy. 83 Mercedes, TX 78570
(866) 225-5683
www.magicvalley.coop

Sharyland Distribution & Transmission Services LLC

1807 Ross Ave., Suite 460
Dallas, TX 75201
(214) 978-8351
bbeverly@sharyland.com

South Texas Electric Cooperative Inc.

P. O. Box 119 Nursery, TX 77976
(956) 377-7125
mbautista@stec.org
www.stec.org

ELECTRONICS, MARINE

AP Sensing Americas LP

13280 NW Freeway, Suite F, #355
Houston, TX 77040
(281) 304-0128
Fax: (281) 256-2392
rich.holeman@apsensing.com
www.apsensing.com

Seatrium AmFELS, Inc.

20000 State Hwy. 48
Brownsville, TX 78521
(956) 831-8220 Fax: (956) 831-6220
www.seatrium.com

ENGINEERING, MARINE

AP Sensing Americas LP

13280 NW Freeway, Suite F, #355
Houston, TX 77040
(281) 304-0128 Fax: (281) 256-2392
www.apsensing.com

Back Up Solutions

619 Artisan Way
San Antonio, TX 78260
(956) 342-0506
rubmart@msn.com

Gonzalez Engineering & Surveying Inc.

153 E. Price Road
Brownsville, TX 78521
(956) 546-5515 Fax: (956) 546-2804
edmundogonzalezengineering.com

Half Associates Inc.

1075 Paredes Line Road, Suite B
Brownsville, TX 78521
(956) 303-7100
jclint@half.com
www.half.com

HDR Engineering Inc.

555 N. Carancahua, Suite 1600
Corpus Christi, TX 78401-0850
(361) 696-3300 Fax: (361) 696-3385
jeffrey.massengill@hdrinc.com
www.hdrinc.com

Seatrium AmFELS Inc.

20000 State Hwy. 48
Brownsville, TX 78521
(956) 831-8220 Fax: (956) 831-6220
www.seatrium.com

Mejia & Rose Inc.

1643 W. Price Road
Brownsville, TX 78520
(956) 544-3022 Fax: (956) 544-3068
mandrinc@cngmail.com
www.mejiarose.com

ENVIRONMENTAL & GEOTECHNICAL ENGINEERING

AP Sensing Americas LP

13280 NW Freeway, Suite F, #355
Houston, TX 77040
(281) 304-0128 Fax: (281) 256-2392
rchtax@aol.com
www.apsensing.com

Fugro (USA) Inc.

6100 Hillcroft Ave.
Houston, TX 77081
(713) 369-5600 Fax: (713) 346-4054
www.fugro.com

HDR Engineering Inc.

555 N. Carancahua, Suite 1600
Corpus Christi, TX 78401-0850
(361) 696-3300 Fax: (361) 696-3385
jeffrey.massengill@hdrinc.com
www.hdrinc.com

Intertek-PSI

2020 North Loop 499, Suite 302
Harlingen, TX 78550
(956) 423-6826 Fax: (956) 423-5735
raymundo.martinez@intertek.com
www.intertek.com/building

MEG Engineers

1221 E. Tyler Ave.
Harlingen, TX 78550
(956) 702-8500 Fax: (956) 702-4180
megengineers.com

Millennium Engineers Group

1221 E. Tyler Ave.
Harlingen, TX 78550
(956) 702-8500 Fax: (956) 702-4180
apalma@megenineers.com
www.megenineers.com

Pile Dynamics Inc.

30725 Aurora Road
Cleveland, OH 44139
(623) 580-8990 or (956) 579-1364

Raba Kistner

1244 Robinhood Drive, Suite 101
Brownsville, TX 78521
(956) 682-5332
iarjona@rkci.com
www.rkci.com

RO Engineering, PLLC.
2705 E. Davis Road, Suite A
Edinburg, TX 78542
(956) 513-1849
r.olivarez@ro-engineering.com
www.ro-engineering.com

Terracon Consultants Inc.
1506 Mid Cities Drive
Pharr, TX 78577
(956) 283-8254 Fax: (956) 283-8279
stephanie.cardoza@terracon.com
www.terracon.com

ENVIRONMENTAL CLEANUP

All Star Metals LLC
101 Box Car Road
Brownsville, TX 78521
(956) 838-2110 Fax: (956) 838-2190
www.allstarmetals.com

BC Equipment Sales Inc.
201 E. Expressway 83
La Feria, TX 78559
(956) 379-8664 or (956) 797-0072
rcuevas@bc-equipment.com
www.bcequipment.com

RGV Pump & Equipment LLC dba Oil Runners
940 Anzalduas Drive
San Benito, TX 78586
(956) 399-1400 Fax: (210) 855-8870
rgvpumps@aol.com

RM Walsdorf Inc.
4501 Bill Reed Rd
Brownsville, TX 78521
(956) 831-3984 Fax: (956) 831-4923
kim@rmwalsdorf.com

Terracon Consultants Inc.
1506 Mid Cities Drive
Pharr, TX 78577
(956) 283-8254 Fax: (956) 283-8279
stephanie.cardoza@terracon.com
www.terracon.com

EQUIPMENT & SUPPLIES, MARINE

Action Supply
5513 Norments Street
Houston, TX 77039
(281) 315-3841
www.actionsupplyinc.com

AP Sensing Americas LP
13280 NW Freeway, Suite F, #355
Houston, TX 77040
(281) 304-0128 Fax: (281) 256-2392
rich.holeman@apsensing.com
www.apsensing.com

BC Equipment Sales Inc.
201 E. Expressway 83
La Feria, TX 78559
(956) 379-8664 or (956) 797-0072
rvela@bc-equipment.com
www.bcequipment.com

Back Up Solutions
619 Artisan Way
San Antonio, TX 78260
(956) 342-0506
rubmart@msn.com

portofbrownsville.com

Dix Shipping Company Inc.
5500 R.L. Ostos Road
Brownsville, TX 78521
(956) 831-4228 Fax: (956) 831-8559
lostos@dixshipping.com
www.dixshipping.com

Equipment Depot
900 W. Expressway 83
Donna, TX 78537
(956) 461-5858 Fax: (956) 464-5844
javier.escamilla@eqdepot.com
www.equipmentdepot.com

Holt CAT
10701 N. Highway 281
Edinburg, TX 78541
(956) 292-7900
www.holtcat.com

Nuga Diesel Truck Parts
3300 E. 14th St.
Brownsville, TX 78521
(956) 541-7169 Fax: (956) 541-7317
tanyanunez@nugadiesel.com
www.nugadiesel.com

Pile Dynamics Inc.
30725 Aurora Road
Cleveland, OH 44139
(623) 580-8990 or (956) 579-1364

Rodco Marine Supply Inc.
1750 Anglers Place Road
Brownsville, TX 78521
(956) 831-8271 Fax: (956) 831-9550
rodco@rodcomarine.com
www.rodcomarine.com

Shallow Water Marine
20005 State Hwy. 48
Brownsville, TX 78521
(956) 240-4084

Zimco Marine LLC
1430 Everglades Road
Brownsville, TX 78521
(956) 831-7828 Fax: (956) 831-0135

EXPORT PACKING & RIGGING

Brownsville Gulfside Warehouse Inc.
400 R.L. Ostos Road
Brownsville, TX 78521
(956) 831-4241 Fax: (956) 831-2200

CSC Sugar LLC
36 Grove St.
New Canaan, CT 06840
(203) 846-5610
sales@cscsugar.com
www.cscsugar.com

Dix Shipping Company Inc.
5500 R.L. Ostos Road
Brownsville, TX 78521
(956) 831-4228 Fax: (956) 831-8559
lostos@dixshipping.com
www.dixshipping.com

Gulf Stream Marine Inc.
2700 R.L. Ostos Road
Brownsville, TX 78521
(956) 831-6766 Fax: (956) 831-6763
info@gulfstreammarine.com
www.gulfstreammarine.com

Kuehne + Nagel
15450 Diplomatic Plaza
Houston, TX 77032
(281) 449-8888
jim.mcneille@kuehne-nagel.com
www.kuehne-nagel.com

Panalpina Inc.
19409 Kenswick Drive
Humble, TX 77338
(281) 446-0600 Fax: (281) 548-7553
carol.fox@panalpina.com
www.panalpina.com

Texan Cement
3801 Foust Road
Brownsville, TX 78521
(956) 838-9115
jquintanilla@texacement.com
www.texacement.com

FLOATING DRY DOCK

Seatrium AmFELS Inc.
20000 State Hwy. 48
Brownsville, TX 78521
(956) 831-8220 Fax: (956) 831-6220
www.seatrium.com

FOREIGN TRADE ZONE

Brownsville South Padre Island International Airport
700 Amelia Earhart Drive
Brownsville, TX 78521
(956) 542-4373
flybrownsville@cob.us
www.flybrownsville.com

Bluewing One LLC
11700 Old Hwy. 48
Brownsville, TX 78521
(713)515-4288
dmalone@bluewingmidstream.com
www.bluewingone.com

Bluewing Royal LLC
1005 Anchor Road/
Old State Highway 48
Brownsville, TX 78521
(713)515-4288
dmalone@bluewingmidstream.com
www.bluewingone.com

Brownsville Gulfside Warehouse Inc.
400 R.L. Ostos Road
Brownsville, TX 78521
(956) 831-4241 Fax: (956) 831-2200
rsarquis@brownvillegulfside.com
www.dixshipping.com

Interlube Corporation Inc.
750 W. Anchor Road
Brownsville, TX 78521
(956) 831-7046
www.interlubecorp.com

Seatrium AmFELS Inc.
20000 State Hwy. 48
Brownsville, TX 78521
(956) 831-8220 Fax: (956) 831-7498
www.seatrium.com

BUSINESS DIRECTORY

Loera Customs Brokerage Inc.
5845 E. 14th St.
Brownsville, TX 78521
(956) 831-9000 Fax: (956) 831-4103
minerva@loeracbi.com
www.loeracbi.com

Motus M1 Terminals
14301 R.L. Ostos Road
Brownsville, TX 78521
(210) 298-2222
hrivera@motus.energy
www.motus.energy

Parker & Company
605-A Vermillion Road
Brownsville, TX 78521
(956) 831-2000 Fax: (956) 831-4140
www.parkerandcompany.com

**Parker & Company
NAFTA Site**
3301 NAFTA Parkway Suite B
Brownsville, TX 78521
(956) 831-2000 Fax: (956) 831-4140
www.parkerandcompany.com

Port of Brownsville FTZ No. 62
1000 Foust Road
Brownsville, TX 78521
(956) 831-4592 Fax: (956) 831-5006
trodriguez@portofbrownsville.com
www.portofbrownsville.com

**TransMontaigne Operating
Company LP**
10150 Old Hwy. 48 South
Brownsville, TX 78521
(956) 831-3531 Fax: (956) 831-3870
lrivera@transmontaigne.com
www.transmontaigne.com

Panasonic (FINSA-Los Indios)
1101 Joaquin Cavazos Blvd
Los Indios, TX 78567
(956) 365-7700

FREIGHT CONSOLIDATORS/NVOCCS

Gulf Stream Marine Inc.
2700 R.L. Ostos Road
Brownsville, TX 78521
(956) 831-6766
info@gulfstreammarine.com
www.gulfstreammarine.com

Kuehne + Nagel
15450 Diplomatic Plaza
Houston, TX 77032
(281) 449-8888
jim.mcneille@kuehne-nagel.com
www.kuehne-nagel.com

Panalpina Inc.
19409 Kenswick Drive
Humble, TX 77338
(281) 446-0600 Fax: (281) 548-7553
carol.fox@panalpina.com
www.panalpina.com

FREIGHT FORWARDERS

Kuehne + Nagel
15450 Diplomatic Plaza
Houston, TX 77032
(281) 449-8888
jim.mcneille@kuehne-nagel.com
www.kuehne-nagel.com

Panalpina Inc.
19409 Kenswick Drive
Humble, TX 77338
(281) 446-0600 Fax: (281) 548-7553
carol.fox@panalpina.com
www.panalpina.com

Parker & Company
4694 Jaime Zapata Ave.
Brownsville, TX 78521
(956) 831-2000 Fax: (956) 831-4140
fparker@parker-logistics.com
www.parkerandcompany.com

**Roser & Cowen Logistical Customs
Services LTD**
4695 Towerwood Drive
Brownsville, TX 78521
(956) 831-8533
nroser@rosercowen.com
www.rosercowen.com

GOVERNMENTAL AGENCIES

**Brownsville Public Utilities Board
(BPUB)**
1425 Robinhood Drive
Brownsville, TX 78521
(956) 983-6100 Fax: (956) 983-6289
www.brownsville-pub.com

**Cameron County International Bridge
System**
3310 S. Expressway 77
Brownsville, TX 78521
(956) 574-8771 Fax: (956) 574-8778
RSPCA@co.cameron.tx.us
www.co.cameron.tx.us

**Cameron County Regional Mobility
Authority (CCRMA)**
3461 Carmen Ave.
Rancho Viejo, TX 78575
(956) 621-5571 Fax: (956) 621-5590
info@ccrma.org
www.ccrma.org

Cameron County Sheriff's Office
7300 Old Alice Road Olmito, TX 78575
(956) 554-6700
www.co.cameron.tx.us

City of Brownsville
1001 E. Elizabeth St.
Brownsville, TX 78520
(956) 546-HELP (4357)
www.cob.us

Pharr International Bridge
9900 S. Cage Blvd. Pharr, TX 78577
(956) 402-4660 Fax: (956) 223-2013
luis.bazan@pharr-tx.gov
www.pharrbridge.com

Port of Brownsville
1000 Foust Road Brownsville, TX 78521
(956) 831-4592 or 800-978-5395
www.portofbrownsville.com

**Port Isabel-San Benito Navigation
District**
250 Industrial Drive
Port Isabel, TX 78578
(956) 943-7826
sbearden@pisbnd.com
www.portofportisabel.com

U.S. Coast Guard MSD Brownsville
(956) 832-0517
www.uscg.mil/d8/sectcorpuschristi

GRAIN ELEVATOR

West Plains LLC
9155 R.L. Ostos Road
Brownsville, TX 78521
(832) 413-2466
www.westplainsllc.com

HARBOR MASTER OFFICE

Mike Davis, Harbor Master
400 Windhaus Road
Brownsville, TX 78521
(956) 831-8256 Fax: (956) 831-3085
mdavis@portofbrownsville.com
www.portofbrownsville.com

**Carlos Martinez,
Assistant Harbor Master**
400 Windhaus Road
Brownsville, TX 78521
(956) 831-8256 Fax: (956) 831-3085
cmartinez@portofbrownsville.com
www.portofbrownsville.com

HIGHER EDUCATION INSTITUTIONS

**Our Lady of the Lake University Rio
Grande Valley Campus**
1650 S. Main/P.O. Box 420
La Feria, TX 78559
(956) 277-0146
www.ollusa.edu

South Texas College
400 N. Border Weslaco, TX 78596
(855) 468-6782
www.southtexascollege.edu

**Texas A&M University Higher
Education Center at McAllen**
6200 Tres Lagos Blvd.
McAllen, TX 78504
(956) 271-1300
www.mcallen.tamu.edu

**Texas A&M University-Kingsville
700 University Blvd**
Kingsville, TX 78363
(361) 593-2111
www.tamuk.edu

Texas Southmost College
80 Fort Brown Brownsville, TX 78520
(956) 295-3600
www.tsc.edu

Texas State Technical College
1902 N. Loop 499 Harlingen, TX 78550
(800) 852-8784
www.tstc.edu

**The University of Texas Rio Grande
Valley Brownsville Campus**
One West University Blvd.
Brownsville, TX 78520

Edinburg Campus
1201 West University Dr.
Edinburg, TX 78539
www.utrgv.edu

HOTELS

Beach Resort at South Padre Island
100 Padre Island Blvd
South Padre Island, TX 78597
(956) 426-9066
www.beachresortspi.com

Courtyard by Marriott Brownsville
3955 N. Expressway
Brownsville, TX 78520
(956) 350-4600
www.marriott.com

Fairfield Inn & Suites by Marriott, Brownsville North
804 E. Morrison Rd
Brownsville, Texas 78526
956-667-5278 Fax: (956) 621-1840
www.brownsvillefairfield.com

Hampton Inn & Suites Brownsville
3000 N. Expressway
Brownsville, TX 78526
(956) 548-0005
www.hamptoninn3.hilton.com

Holiday Inn
651 Sunrise Blvd.
Brownsville, TX 78526
(956) 541-3332 Fax: (956) 621-2993
https://www.ihg.com/

Homewood Suites by Hilton Brownsville
3759 N. Expressway
Brownsville, TX 78520
(956) 574-6900
www.homewoodsuites3.hilton.com

La Quinta Inn & Suites Brownsville North
5051 N. Expressway
Brownsville, TX 78520
(956) 350-2118
www.laquintabrownsvillenorth.com

Pearl South Padre Resort
310 Padre Blvd.
South Padre Island, TX 78597
(956) 761-6551
www.pearlsouthpadre.com

Residence Inn by Marriott
3975 N. Expressway
Brownsville, TX 78520
(956) 350-8100
www.marriott.com/hotels/travel/brori-residence-inn-brownsville/

Staybridge Suites
2900 Pablo Kisel Blvd.
Brownsville, TX 78526
(956) 504-9500 Fax: (956) 504-9584
info-brownsville@ascensionmgt.com
www.staybridge.com/brown

Texas Inn Brownsville
845 N. Expressway
Brownsville, TX 78520
(956) 542-5501
www.hotelbrownsvilletexas.com

portofbrownsville.com

Quality Inn
7051 S. Padre Island Hwy.
Brownsville, TX 78526
(956) 621-3299

INSURANCE, CARGO

Parker & Company
4694 Jaime Zapata Ave.
Brownsville, TX 78521
(956) 831-2000 Fax: (956) 831-4140
fparker@parker-logistics.com
www.parkerandcompany.com

Roser & Cowen Logistical Customs Services LTD
4695 Towerwood Drive
Brownsville, TX 78521
(956) 831-8533
nrosen@rosercowen.com
www.rosercowen.com

INSURANCE, MARINE

Kuehne + Nagel
15450 Diplomatic Plaza
Houston, TX 77032
(281) 449-8888
jim.mcneille@kuehne-nagel.com
www.kuehne-nagel.com

Parker & Company
4694 Jaime Zapata Ave.
Brownsville, TX 78521
(956) 831-2000 Fax: (956) 831-4140
fparker@parker-logistics.com
www.parkerandcompany.com

LABOR ORGANIZATIONS

International Longshoremen's Association #2995
8150 Padre Island Hwy.
Brownsville, TX 78521
(956) 831-4133

West Gulf Maritime Association (WGMA)
1717 Turning Basin Drive #200
Houston, TX 77024
(713) 678-7665 Fax: (855) 715-1717
robert@wgma.org
www.wgma.org

LINE HANDLERS

Brownsville Mooring
454 Lindale Drive
Brownsville, TX 78521
(956) 551-4735 Fax: (956) 443-0050

M & M Mooring & Marine Services
2700 R.L. Ostos Road
Brownsville, TX 78521
(956) 371-2476
markclive67@hotmail.com
www.mm-mooringmarineservices.com

MACHINING & FABRICATING

Back Up Solutions
619 Artisan Way
San Antonio, TX 78260
(956) 342-0506
rubmart@msn.com

Seatrium AmFELS Inc.
20000 State Hwy. 48
Brownsville, TX 78521
(956) 831-8220 Fax: (956) 831-6220
www.seatrium.com

Port Fabricator
20000 St. Hwy 48
Brownsville, TX 78521
(956) 831-7557 Fax: (956) 831-7594
jrevuelta@portfabricators.com

Zimco Marine LLC
1430 Everglades Road
Brownsville, TX 78521
(956) 831-7828 Fax: (956) 831-0135
gwlzimco@aol.com

MINERALS

905/BMW Inc.
4501 N. Mineral Loop
Brownsville, TX 78521
(956) 832-0280
april@905logistics.com
www.905logistics.com

Allied Mineral Products Inc.
3025 Mineral Loop
Brownsville, TX 78521
(956) 831-2022
mdj@alliedmin.com

Gulf Facilities Inc.
4201 Foust Road
Brownsville, TX 78521
(956) 831-4007 Fax: (956) 831-9751
info@schaeferstevedoring.com
www.gulf-facilities.com

CEMEX Construction Materials
3600 N. Chemical Road
Brownsville, TX 78521
(956) 386-1452
www.cemexusa.com

Vulcan Construction Materials LP
10905 R.L. Ostos Road
Brownsville, TX 78521
(956) 831-8888
farrard@vmcmail.com
www.vulcanmaterials.com

MISCELLANEOUS

905/BMW Inc.
4501 N. Mineral Loop
Brownsville, TX 78521
(956) 832-0280
april@905logistics.com
www.905logistics.com

A-Mex Financial Services
17755 State Hwy. 48
Brownsville, TX 78521
(956) 544-5000
a-mex@sbcglobal.net

AP Sensing Americas LP
13280 NW Freeway, Suite F, #355
Houston, TX 77040
(281) 304-0128 Fax: (281) 256-2392
rich.holeman@apsensing.com
www.apsensing.com

BUSINESS DIRECTORY

Aguaworks Pipe & Supply LLC

2907 N. Central Ave.
Brownsville, TX 78526
(956) 831-2500 Fax: (956) 831-2525
thomas.bennett@aguaworkspipe.com
www.aguaworkspipe.com

Alamo Concrete Products Ltd.

600 Yard Road
Brownsville, TX 78521
(210) 208-1570
awalsh@alamocement.com

American Oxygen Company

11700 State Hwy. 48
Brownsville, TX 78521
52-844-4390707
wheelock@aocgas.com

Amspec LLC

1700 R.L. Ostos Road
Brownsville, TX 78521
(956) 433-2511
Brownsville@amspecgroup.com
www.amspecllc.com

Austin Star Detonator Co.

5755 N. Cantu Road
Brownsville, TX 78521
(956) 831-7751
ignacio.reyes@austinpowder.com
www.austinpowder.com

BC Equipment Sales Inc.

201 E. Expressway 83
La Feria, TX 78559
(956) 379-8664 or (956) 797-0072
rvela@bc-equipment.com
www.bcequipment.com

Back Up Solutions

619 Artisan Way
San Antonio, TX 78260
(956) 342-0506
rubmart@msn.com

Ben's Glass & Metal

1125-A E. 13th St.
Brownsville, TX 78520
(956) 546-1236 Fax: (956) 574-0523
bensglass1125@gmail.com

Cameron County International Bridge System

3310 S. Expressway 77
Brownsville, TX 78521
(956) 574-8771 Fax: (956) 574-8778
RSPCA@co.cameron.tx.us
www.co.cameron.tx.us

CSC Sugar

8700 Old Highway 48
Brownsville, TX 78521
(956) 328-7851
nrodriguez@cscsugar.com
www.cscsugar.com

Diesel Fuel Injection Inc.

6918 Padre Island Hwy.
Brownsville, TX 78521
(956) 831-4744
Fax: (956) 831-9473
pmiddlediesel@gmail.com

Duro Bag/Novolex

3401 David Shore Drive
Brownsville, TX 78521
(956) 831-4209 Fax: (956) 831-2112
www.novolex.com

Edwards Abstract and Title Co.

1075 Paredes Line Road
Brownsville, TX 78526
(956) 542-6777
brownsville@edwardsabstract.co
www.edwardsabstract.com

Epoxy Design Systems Inc.

5805 Centralcrest St., Suite A
Houston, TX 77092
(713) 461-8733 Fax: (281) 856-9909
hank@epoxydesign.com
www.epoxydesign.com

Estrada Hinojosa & Company, Inc.

1717 Main Street LB 47, Suite 470
Dallas, TX 75201
(214) 658-1670 Fax: (214) 292-8849
info@ehmuni.com
www.estradahinojosa.com

Express Employment Professionals

954 West Price Road
Brownsville, TX 78521
(956) 550-8510
www.expresspros.com

Fortune Ferrous Inc.

21301 R.L. Ostos Road
Brownsville, TX 78521
(956) 982-0205
stevenmckeag@fortunegroup.net

Forza Steel

40881 State Hwy. 48
Brownsville, TX 78521
www.forzasteel.com

H & H Oil

7941 Recycle Drive
Corpus Christi, TX 78409
(361) 289-5220 Fax: (361) 289-6304
chanceb@hhrecycling.com
www.hhrecycling.com

Hi-Tech Welding Institute

9675 Joe G. Garza, Sr. Rd.
Brownsville, TX 78521
(956) 543-9762
hitechwi@aol.com

Holt CAT

10701 N. Highway 281
Edinburg, TX 78541
(956) 292-7900
www.holtcat.com

Intercoastal Salvage Inc.

6915 FM 511 Brownsville, TX 78526
(956) 831-8661
nancygaytan10@gmail.com

International Seafarer Center

220 W. Windhaus Road
Brownsville, TX 78521
(956) 371-6039
palbro05@gmail.com
www.brownsvilseafarer.com

Koncept Safety

7846 Fortune Dr. San Antonio, TX 78250
(210) 521-1980 Fax: (210) 684-5005
sales@konceptsafety.com
www.konceptsafety.com

Loma Alta Skeet & Trap Inc.

500 Old Port Isabel Road
Brownsville, TX 78521
(956) 371-6162
joe.paredes@yahoo.com

Lupe's Wrecker Service

6725 Portway Drive
Brownsville, TX 78521
(956) 831-4188 Fax: (956) 831-9488
lupeswrecker14@yahoo.com

Magic Valley Concrete LLC

6265 FM 511
Brownsville, TX 78521
(956) 580-2502
rufino@riovalleypipe.com
www.mvconcrete.com

Oil Patch Fuel & Supply Inc.

1905 Bayou Court
Brownsville, TX 78521
(956) 831-4839
frank@oilpatchfuelsupply.com
www.oilpatchfuelsupply.com

PeopleReady

2045 E. Price Road Suite 1
Brownsville, TX 78521
(956) 982-1443
www.peopleready.com

Pharr International Bridge

9900 S. Cage Blvd.
Pharr, TX 78577
(956) 402-4660 Fax: (956) 223-2013
luis.bazan@pharr-tx.gov
www.pharrbridge.com

Pile Dynamics Inc.

30725 Aurora Road
Cleveland, OH 44139
(623) 580-8990 or (956) 579-1364
sgranger5357@gmail.com

Quality Weighing Services Inc.

875 N. Milo Road
Brownsville, TX 78521
(956) 831-8253 Fax: (956) 831-8649
qualityweighing@att.net

Quantum-Mechanical Contractors LLC.

2705 E. Davis Road, Suite A
Edinburg, TX 78542
(956) 513-1849
quantum.mcon@gmail.com

R&D Personnel

4409 N. 22nd St. McAllen, TX 78504
(956) 971-0152 Fax: (956) 971-0258
recruit@rdpersonnel.com
www.rdpersonnel.com

Renoworks LLC.

2705 E. Davis Road, Suite A
Edinburg, TX 78542
(956) 513-1849
rene@renoworks.com

RM Walsdorf Inc.

4501 Bill Reed Rd
Brownsville, TX 78521
(956) 831-3984 Fax: (956) 831-4923
kim@rmwalsdorf.com

RescueGear Inc.

5909 Burnet Road
Austin, TX 78757
(800) 321-8022 Fax: (512) 451-4607
jamie@rescuegear.com
www.rescuegear.com

Rio Grande LNG LLC

1000 Louisiana Street Suite 3900
Houston, Texas, USA 77002
(713) 574-1880 Fax: (713) 574-1880
info@riograndelng.com
www.riograndelng.com

Rodicel Inc.

2685 N. Indiana Ave.
Brownsville, TX 78526
(956) 832-0995
mora@rodicel.com

RO Engineering, PLLC.

2705 E. Davis Road, Suite A
Edinburg, TX 78542
(956) 513-1849
r.olivarez@ro-engineering.com
www.ro-engineering.com

ST Marine

3210 Dry Dock St. Brownsville, TX 78521
(956) 831-7557 Fax: (956) 831-7594
jrevuelta@portfabricators.com

SOLICE – Full Color Digital Signs

7200 Bonham Road
Brownsville, TX 78521
(956) 266-3018 Fax: (956) 831-2157
solice2000@yahoo.com
www.solice2000.com

T.D. American Limestone Products LLC

9805 Old Hwy. 48
Brownsville, TX 78521
(956) 336-9261
mjimenez@grupotreda.com

TCS Brokerage

174 Industrial Drive
Brownsville, TX 78521
(956) 544-4575 Fax: (956) 544-6950
martha@tcsbrokerage.com
www.tcsbrokerage.com

Taqueria Sylos

4200 R.L. Ostos Road
Brownsville, TX 78521
(956) 346-0430

Texan Cement

3801 Foust Road Brownsville, TX 78521
(956) 838-9115
jquintanilla@texancement.com
www.texancement.com

Texas LNG LLC

2800 North Loop West, Suite 910
Houston, TX 77092
(832) 849-4920
info@txlng.com
www.txlng.com

portofbrownsville.com

Texas Marine Ventures Inc.

13401 State Hwy. 48
Brownsville, TX 78521
(956) 943-1435
jsalazar64@rgv.rr.com

The Port Occupational and Medical Clinic.

12161 State Hwy. 48
Brownsville, TX 78521
(956) 541-5231
diazholdings@icloud.com
www.theportclinic.com

Valley Grocers LLC

634 E Fronton St.
Brownsville, TX 78521
(956) 542-3576
info@valleygrocers.com
www.valleygrocers.com

Vulcan Construction Materials LP

10905 R.L. Ostos Road
Brownsville, TX 78521
(956) 831-8888
farrard@vmcmail.com
www.vulcanmaterials.com

Wolfe Sandblasting & Industrial Painting

1800 Bayou Court
Brownsville, TX 78521
(956) 312-1065
wolfesandblasting@att.net

PILOTAGE**Brazos Santiago Pilots**

P. O. Box 414
Port Isabel, TX 78578
(956) 943-3680
www.brazossantiagopilots.com

PIPELINE OPERATOR**Bryant Industrial Services LLC**

2600 Callaway Drive
Brownsville, TX 78521
(956) 838-5120 Fax: (956) 761-1255
bryantindustrial@yahoo.com
www.bryantindustrialservices.co

Diamondback Pipeline LLC

1670 Broadway, Suite 3100
Denver, CO 80202
(956) 831-3531
kgarcia@transmontaigne.com

Interlube Corp. Inc.

750 N. Anchor Road
Brownsville, TX 78521
(956) 831-7046 Fax: (956) 831-8064
info@interlube.us
www.interlube.us

Motus M1 Terminals

14301 R.L. Ostos Road
Brownsville, TX 78521
(210) 298-2222
hrivera@motus.energy
www.motus.energy

PMI Service North America Inc.

909 Fannin St.
Houston, TX 77010
(713) 567-0189

Seadrift Pipeline Corporation

P.O. Box 4286 Houston, TX 77210
(282) 966-4068
dialjh@dow.com
www.dow.com/pipeline/gulfcoast/

TransMontaigne Operating Company LP

10150 State Hwy. 48
Brownsville, TX 78521
(956) 831-3531
kgarcia@transmontaigne.com
www.transmontaigne.com

Valero Brownsville Terminal LLC

10950 Old State Hwy. 48
Brownsville, TX 78521
(210) 345-3206
james.stegall@valero.com

PORT AUTHORITY ATTORNEY**Rentfro, Irwin & Irwin Law Firm PLLC**

1650 Paredes Line Road Suite 102
Brownsville, TX 78521
(956) 542-4329 Fax: (956) 542-4320
info@rentfrolawfirm.net
www.rentfrolawfirm.net

PORT OF BROWNSVILLE ADMINISTRATION**Eduardo A. Campirano**

Port Director & CEO
1000 Foust Road Brownsville, TX 78521
(956) 831-4592 Fax: (956) 831-5006
eacampirano@portofbrownsville.com
www.portofbrownsville.com

Arturo Gomez

Deputy Port Director of Operations
1000 Foust Road Brownsville, TX 78521
(956) 838-7030 Fax: (956) 831-5006
agomez@portofbrownsville.com
www.portofbrownsville.com

Dr. Melinda Rodriguez

Deputy Port Director of Administration
1000 Foust Road Brownsville, TX 78521
(956) 838-7010 Fax: (956) 831-5006
mrodriguez@portofbrownsville.com
www.portofbrownsville.com

Ariel Chavez II, P.E./R.P.L.S.

Director of Engineering Services
1000 Foust Road Brownsville, TX 78521
(956) 838-7002 Fax: (956) 831-5006
achavez@portofbrownsville.com
www.portofbrownsville.com

William G. Dietrich

Chief of Police & Security
2993 N. Indiana Ave., Suite B,
Brownsville, TX 78526
(956) 509-2100 Fax: (956) 831-6350
wdietrich@portofbrownsville.com
www.portofbrownsville.com

BUSINESS DIRECTORY

Jose Herrera

Director of Facilities Maintenance
1000 Foust Road Brownsville, TX 78521
(956) 831-4592 Fax: (956) 831-5242
jherrera@portofbrownsville.com
www.portofbrownsville.com

Jorge I. Montero

Director of Communications
1000 Foust Road Brownsville, TX 78521
(956) 838-7006 Fax: (956) 831-5006
jmontero@portofbrownsville.com
www.portofbrownsville.com

Margie S. Recio

Director of Administrative Services
1000 Foust Road Brownsville, TX 78521
(956) 838-7021 Fax: (956) 831-5006
mrecio@portofbrownsville.com
www.portofbrownsville.com

Antonio "Tony" Rodriguez, A.Z.S.

Director of Cargo Services & FTZ
Administrator
1000 Foust Road Brownsville, TX 78521
(956) 838-7033 Fax: (956) 831-5006
trodriguez@portofbrownsville.com
www.portofbrownsville.com

Zeus Yañez

Director of Finance
1000 Foust Road Brownsville, TX 78521
(956) 838-7023 Fax: (956) 831-5106
zyanez@portofbrownsville.com
www.portofbrownsville.com

Guillermo Rico

Accounts Sales Manager
1000 Foust Road Brownsville, TX 78521
(956) 838-7045 Fax: (956) 831-5006
grico@portofbrownsville.com
www.portofbrownsville.com

PUBLIC SCALES

Port Public Scale

3501 Foust Road
Brownsville, TX 78521
(956) 838-0606
publicscale@yahoo.com

Quality Weighing Services Inc.

875 N. Milo Road
Brownsville, TX 78521
(956) 831-8253
Fax: (956) 831-8649
qualityweighing@att.net

West Plains LLC

9155 R.L. Ostos Road
Brownsville, TX 78521
(832) 413-2466
www.westplainsllc.com

RAIL CARRIERS/SERVICE

Brownsville & Rio Grande International Railway (BRG)

12650 State Hwy. 48
Brownsville, TX 78521
(956) 548-9201
sgonnella@omnitrax.com
www.omnitrax.com

BSNF Railway

2650 Lou Menk Drive
Ft. Worth, TX 76131-2830
(323) 277-2016
Samantha.galltin@bsnf.com
www.bsnf.com

Canadian Pacific Kansas City (CPKC)

Col. Hidalgo, Monterrey
Nuevo Leon 64420, Mexico
011-52-818-305-7850
deaton@cpkcm.mx
www.cpkcsr.com/es-mx

Omega Rail Services Inc.

6567 W. U.S. Hwy. 90
Del Rio, TX 78840
(830) 488-6224
jtorres@omegarailservices.com
www.omegarailservices.com

OmniTRAX Inc. (BRG)

252 Clayton St., 4th Floor
Denver, CO 80206
(303) 398-0500
info@omnitrax.com
www.omnitrax.com

Union Pacific Railroad

24125 Aldine Westfield Road
Spring, TX 77373
(281) 350-7592
Fax: (402) 223-2231
tomoeller@up.com
www.up.com

RECYCLING

All Star Metals LLC

101 Box Car Road
Brownsville, TX 78521
(956) 838-2110 Fax: (956) 838-2190
www.allstarmetals.com

BC Equipment Sales Inc.

201 E. Expressway 83
La Feria, TX 78559
(956) 379-8664 or (956) 797-0072
rcuevas@bc-equipment.com
www.bcequipment.com

RESERVE YOUR AD TODAY!



FOR MORE INFORMATION:

Jorge I. Montero

(956) 838-7006

jmontero@portofbrownsville.com

EMR/International Shipbreaking Ltd. LLC
18601 R.L. Ostos Road
Brownsville, TX 78521
(956) 831-2299 Fax: (956) 831-0216
crystal.alsup@emrgroup.com
internationalshipbreaking.com
www.emrgroup.com

Fortune Ferrous Inc.
21301 R.L. Ostos Road
Brownsville, TX 78521
(956) 928-1702 Fax: (956) 928-1364
artmcginnis@fortunegroup.net

H & H Oil
7941 Recycle Drive
Corpus Christi, TX 78409
(361) 289-5220 Fax: (361) 289-6304
chanceb@hhrecycling.com
www.hhrecycling.com

Port of Brownsville Recycling
6915 FM 511 Brownsville, TX 78526
(956) 831-6707
nancygaytan@pbrecycling.com

SA Recycling /SteelCoast
16200 Joe Garza Sr. Road
Brownsville, TX 78521
(956) 509-2031 Fax: (956) 435-0068
reception@sarecycling.com
www.sarecycling.com

SERVICES, MARINE

AP Sensing Americas LP
13280 NW Freeway, Suite F, #355
Houston, TX 77040
(281) 304-0128 Fax: (281) 256-2392
rich.holeman@apsensing.com
www.apsensing.com

BC Equipment Sales Inc.
201 E. Expressway 83
La Feria, TX 78559
(956) 379-8664 or (956) 797-0072
rvela@bc-equipment.com
www.bcequipment.com

Back Up Solutions
619 Artisan Way
San Antonio, TX 78260
(956) 342-0506
rubmart@msn.com

Brownsville Gulfside Warehouse Inc.
400 R.L. Ostos Road
Brownsville, TX 78521
(956) 831-4241 Fax: (956) 831-2200
rsarquis@brownsvillegulfside.com
www.dixshipping.com

Heavy-Duty Equipment Inc.
5500 R.L. Ostos Road
Brownsville, TX 78521
(956) 831-2783
raostos@dixshipping.com

Holt CAT
10701 N. Highway 281
Edinburg, TX 78541
(956) 292-7900
www.holtcat.com

portofbrownsville.com

Iron Mike Marine Inc.
25 Hawser Bend Road
Los Fresnos, TX 78566
(956) 778-5906
imm1998@aol.com

Seatrium AmFELS Inc.
20000 State Hwy. 48
Brownsville, TX 78521
(956) 831-8220 Fax: (956) 831-6220
www.seatrium.com

Kuehne + Nagel
15450 Diplomatic Plaza
Houston, TX 77032
(281) 449-8888
jim.mcneille@kuehne-nagel.com
www.kuehne-nagel.com

M & M Mooring & Marine Services
2700 RL Ostos Road
Brownsville, TX 78521
(956) 371-2476 Fax: (956) 831-4490
markclive67@hotmail.com

Marine Salvage & Services Inc.
416 W. South Shore Drive
Port Isabel, TX 78578
(956) 943-2648 Fax: (956) 943-4516
billy@marineservice.us
www.marineservice.us

Pete's Fleet
500 Express Dock Road
Brownsville, TX 78521
(956) 491-1011
hdmtx@hotmail.com

Pile Dynamics Inc.
30725 Aurora Road
Cleveland, OH 44139
(623) 580-8990 or (956) 579-1364
sgranger5357@gmail.com

Signet Maritime Corporation
7400 Foust Road
Brownsville, TX 78521
(956) 838-6800 Fax: (956) 838-6801
ida.trevino@signetmaritime.com
www.signetmaritime.com

SA Recycling /SteelCoast
16200 Joe Garza Sr. Road
Brownsville, TX 78521
(956) 509-2031 Fax: (956) 435-0068
reception@sarecycling.com
www.sarecycling.com

Wolfe Sandblasting & Industrial Painting
1800 Bayou Court
Brownsville, TX 78521
(956) 312-1065
donwolfe75@gmail.com
www.wolfesandblastingandindustrialpainting.com

Zimco Marine LLC
1430 Everglades Road
Brownsville, TX 78521
(956) 831-7828
Fax: (956) 831-0135
gwzimco@aol.com

SERVICES, SECURITY

AP Sensing Americas LP
13280 NW Freeway, Suite F, #355
Houston, TX 77040
(281) 304-0128 Fax: (281) 256-2392
rich.holeman@apsensing.com
www.apsensing.com

American Surveillance
55 Galonsky St. Brownsville, TX 78521
(956) 504-5656
Fax: (956) 504-5060
pescobedo@americansurveillanceco.com
www.americansurveillanceco.com

DPS Alarms
355 Old Port Isabel Road
Brownsville, TX 78521
(956) 541-6056 Fax: (956) 541-6961
ajc@dpsalarms.com
www.dpsalarms.com

SHIP REPAIR/RECYCLING

All Star Metals LLC
101 Box Car Road
Brownsville, TX 78521
(956) 838-2110 Fax: (956) 838-2190
www.allstarmetals.com

BC Equipment Sales Inc.
201 E. Expressway 83
La Feria, TX 78559
(956) 379-8664 or (956) 797-0072
rvela@bc-equipment.com
www.bcequipment.com

Bay Bridge Texas LLC
23501 S. R.L. Ostos Road
Brownsville, TX 78521
(956) 838-1414
svyas@baybridgetexas.com

EMR/International Shipbreaking Ltd. LLC
18601 R.L. Ostos Road
Brownsville, TX 78521
(956) 831-2299 Fax: (956) 831-0216
crystal.alsup@emrgroup.com
www.emrgroup.com

Holt CAT
10701 N. Highway 281
Edinburg, TX 78541
(956) 292-7900
www.holtcat.com

Seatrium AmFELS Inc.
20000 State Hwy. 48
Brownsville, TX 78521
(956) 831-8220
Fax: (956) 831 6220

SA Recycling /SteelCoast
16200 Joe Garza Sr. Road
Brownsville, TX 78521
(956) 509-2031 Fax: (956) 435-0068
reception@sarecycling.com
www.sarecycling.com

BUSINESS DIRECTORY

SHIPPING AGENTS

Dix Agency Brownsville LP
5500 R.L. Ostos Road
Brownsville, TX 78521
(956) 831-4228 Fax: (956) 831-2559
www.dixshipping.com
www.dixshipping.com

Fillette Green Shipping Services Corporation
101 N. Shoreline Blvd, Suite 102
Corpus Christi, TX 78374
(361) 446-9547
scott@fillettegreen.com
www.fillettegreen.com

GAC North America
4444 Corona, Suite 100
Corpus Christi, TX 78401
(361) 883-7254
mauricio.rosales@gac.com

General Steamship Corporation
710 Buffalo St., Suite 809
Corpus Christi, TX 78401
(361) 883-2300 Fax: (361) 883-2302
www.gensteam.com

Gulf Harbor Shipping LLC
4444 Corona Drive, Suite 132
Corpus Christi, TX 78411
(361) 888-7400 Fax: (414) 231-8732
corpuschristi@gulpharbor.com
www.gulpharbor.com

Host Agency
400 Mann St., Suite 603
Corpus Christi, TX 78401
(361) 452-8671
corpuschristi@hostagency.com
www.tparkerhost.com

Inchape Shipping
710 Buffalo St., Suite 505
Corpus Christi, TX 78401
(361) 882-1771
www.iss-shipping.com

M & Mooring & Marine Services
4300 R.L. Ostos Road
Brownsville, TX 78521
(956) 371-2476
captmarkclive67@gmail.com
www.mm-mooringmarineservices.com

Moran Gulf Shipping
400 Mann St., Suite 907
Corpus Christi, TX 78401
(361) 884-0903 Fax (361) 887-6132
crp@moranshipping.com
www.moranshipping.com

Norton Lilly International
710 Buffalo St., Suite 501
Corpus Christi, TX 78401
(361) 888-6800
crp-ops@nortonlilly.com
www.nortonlilly.com

STEVEDORES

Dix Shipping Company Inc.
5500 R.L. Ostos Road
Brownsville, TX 78521
(956) 831-4228 Fax: (956) 831-8559
lostos@dixshipping.com
www.dixshipping.com

Gulf Stream Marine Inc.
2700 R.L. Ostos Road
Brownsville, TX 78521
(956) 831-6766
info@gulfstreammarine.com
www.gulfstreammarine.com

Schaefer Stevedoring
4201 Foust Road
Brownsville, TX 78521
(956) 831-4007 Fax: (956) 831-9751
info@schaeferstevedoring.com
www.schaeferstevedoring.com

SURVEYORS, MARINE

Gonzalez Engineering & Surveying Inc.
153 E. Price Road
Brownsville, TX 78521
(956) 546-5515 Fax: (956) 546-2804
edmundo@gonzalezengineering.com

TERMINAL OPERATORS, DRY BULK

Brownsville Gulfside Warehouse Inc.
400 R.L. Ostos Road
Brownsville, TX 78521
(956) 831-4241 Fax: (956) 831-2200
rsarquis@brownsvillegulfside.com-
www.dixshipping.com

Dix Shipping Company Inc.
5500 R.L. Ostos Road
Brownsville, TX 78521
(956) 831-4228 Fax: (956) 831-8559
lostos@dixshipping.com
www.dixshipping.com

Gulf Facilities Inc.
4201 Foust Road
Brownsville, TX 78521
(956) 831-4007 Fax: (956) 831-9751
info@schaeferstevedoring.com
www.gulf-facilities.com

Gulf Stream Marine Inc.
2700 R.L. Ostos Road
Brownsville, TX 78521
(956) 831-6766
info@gulfstreammarine.com
www.gulfstreammarine.com

Schaefer Stevedoring
4201 Foust Road
Brownsville, TX 78521
(956) 831-4007 Fax: (956) 831-9751
info@schaeferstevedoring.com
www.schaeferstevedoring.com

West Plains LLC
9155 R.L. Ostos Road
Brownsville, TX 78521
(832) 413-2466
www.westplainsllc.com

TERMINAL OPERATORS, LIQUID BULK

ABC Gulf Coast Terminal LL
15801 R.L. Ostos Road
Brownsville, TX 78521
(956) 838-0033 Fax: (956) 838-0048
fredf@abcgulfcoast.com

Bluewing One LLC
11700 Old State Hwy. 48
Brownsville, TX 78521
(956) 838-0840
commercialops@bluewingmidstream.com
www.bluewingmidstream.com

Bluewing Royal
1005 Anchor Road/Old State Hwy 48
Brownsville, TX 78521
(956) 831-7117
commercialops@bluewingmidstream.com
www.bluewingmidstream.com

CITGO Petroleum Corporation
11001 R.L. Ostos Road
Brownsville, TX 78521
(956) 831-8241
cmilste@citgo.com
www.citgo.com

CRV Terminals
10155 Old S.H.48 Brownsville, TX 78521
(956) 621-1245
rolando@rvfuels.com

Firebird Bulk Carriers Inc.
9100 State Hwy. 48
Brownsville, TX 78521
(956) 832-0888 Fax: (956) 832-0284
tylerb@firebird-tx.com
www.firebird-tx.com

INTERLUBE Corporation
750 N. Anchor Road
Brownsville, TX 78521
(956) 831-7046
diana@interlube.us
www.interlubecorp.com

KLM Terminal
10925 Old State Hwy 48
Brownsville, TX 78521
(210) 867-5443
billm@klm3c.com

Motus M1 Terminals
14301 R.L. Ostos Road
Brownsville, TX 78521
(210) 298-2222
hrivera@motus.energy
www.motus.energy

Sunoco LLC
9351 Old State Hwy 48
Brownsville, TX 78521
(215) 486-2208

TransMontaigne Operating Company LP
10150 State Hwy. 48
Brownsville, TX 78521
(956) 831-3531
kgarcia@transmontaigne.com
www.transmontaigne.com

Valero Brownsville Terminal LLC
10950 Old State Hwy. 48
Brownsville, TX 78521
(210) 345-3206
james.stegall@valero.com

TOWING, TUG

Signet Maritime Corporation

7400 Foust Road
Brownsville, TX 78521
(956) 838-6800 Fax: (956) 838-6801
ida.trevino@signetmaritime.com
www.signetmaritime.com

TRANSLOAD FACILITY

Brownsville Gulfside Warehouse Inc.

400 R.L. Ostos Road
Brownsville, TX 78521
(956) 831-4241
Fax: (956) 831-2200

Gulf Facilities Inc.

4201 Foust Road
Brownsville, TX 78521
(956) 831-4007
Fax: (956) 831-9751
info@schaeferstevedoring.com
www.gulf-facilities.com

Gulf Stream Marine Inc.

2700 R.L. Ostos Road
Brownsville, TX 78521
(956) 831-6766
info@gulfstreammarine.com
www.gulfstreammarine.com

TRUCKING

Arguindegui Oil Co.

17555 State Hwy 48
Brownsville, TX 78521
(956) 722-5251
guillermo.trevino@argpetro.com

Auto Lineas Sigifredo Garcia Palacios SA de CV

3005 Mineral Loop
Brownsville, TX 78521
(956) 442-3449
asgp_irodriguez@prodigy.net.mx

B & L Freight Service Inc.

2775 Foust Road
Brownsville, TX 78521
(956) 592-0994
bltrucking269@yahoo.com

Bravo Motor Carriers

3664 Commerce Dr. Suite B
Brownsville, Texas 78520
(956) 350 - 4454
bltrucking269@yahoo.com

Brownsville Gulfside Warehouse Inc.

400 R.L. Ostos Road
Brownsville, TX 78521
(956) 831-4241 Fax: (956) 831-2200
rsarquis@brownsvillegulfside.com
www.dixshipping.com

C.R. Trucking LLC

9275 Old State Hwy. 48
Brownsville, TX 78521
(956) 572-5351
rsgarcia73@hotmail.com

portofbrownsville.com

Choptank Transport Inc.

5650 Breckenridge Park Drive,
Suite 103 Tampa, FL 33610
(800) 568-2240
sharon.sonmez@choptanktransport.com
choptanktransport.com

ATS Operations LLC

2981 N. Indiana Ave.
Brownsville, TX 78526
(956) 466-3563

GDO Trucking

2605 N. Indiana Ave.
Brownsville, TX 78526
(956) 572-2513
gdotrucking@hotmail.com

Jonick-Lopez International Transport LLC

5801 Foust Road
Brownsville, TX 78521
(956) 838-1252 Fax: (956) 838-1253
stlopezjr@gmail.com

Kuehne + Nagel

15450 Diplomatic Plaza
Houston, TX 77032
(281) 449-8888
jim.mcneille@kuehne-nagel.com
www.kuehne-nagel.com

Lupe's Wrecker Service

6725 Portway Drive
Brownsville, TX 78521
(956) 831-4188 Fax: (956) 831-9488
lupeswrecker14@yahoo.com

Molina Trucking

2885 Foust Road
Brownsville, TX 78521
(956) 299-1397

Optimum Quality Transfers LLC

9235 Old State Hwy. 48
Brownsville, TX 78521
(956) 592-1020
optimumqualityt@aol.com

Pharr International Bridge

9900 S. Cage Blvd.
Pharr, TX 78577
(956) 402-4660 Fax: (956) 223-2013
luis.bazan@pharr-tx.gov
www.pharrbridge.com

Pittsburgh Intermodal Terminals

90 Century Drive Ambridge, PA 15003
(724) 822-2456 Fax: (724) 266-3911
vnicholas@nicholasinc.com
www.nicholasinc.com

Schafer Stevedoring

4201 Foust Road
Brownsville, TX 78521
(956) 831-4007 Fax: (956) 831-9751
info@schaferstevedoring.com
www.schaferstevedoring.com

Seahorse Transportation Inc.

3051 N. Indiana Road
Brownsville, TX 78526
(956) 831-0600 Fax: (956) 831-4164
ariel@seahorsetransport.net
www.seahorsetransport.net

TLO Logistics

16651 R.L. Ostos Road
Brownsville, TX 78521
(956) 831-7665
tlogisticsusa@gmail.com
www.tlogisticsusa.com

Transporte Internacional Lopez

Ochoa, SA de CV
775 Milo Road
Brownsville, TX 78521
(956) 838-2252
tilsa@prodigy.net.mx

UTILITY COMPANIES

AEP Texas

355 W. Hwy. 77
San Benito, TX 78586
(956) 361-2088
Fax: (956) 361-2090
dlucio@aep.com
www.aeptexas.com

Brownsville Public Utilities Board (BPUB)

1425 Robinhood Drive
Brownsville, TX 78521
(956) 983-6100 Fax: (956) 983-6289
www.brownsville-pub.com

Magic Valley Electric Cooperative

1 ¾ Mi W. Hwy. 83
Mercedes, TX 78570
(866) 225-5683
info@magicvalley.coop
www.magicvalley.coop

Texas Gas Service

5602 Grimes Road
Harlingen, TX 78550
(956) 357-3106
victor.lopez@onegas.com
www.onegas.com

VESSEL FUELING COMPANIES

PMI Service North America Inc.

909 Fannin St.
Houston, TX 77010
(713) 567-0189
dtollefson@pmicim.com

WAREHOUSING & STORAGE

B & L Freight Service Inc.

2775 Foust Road
Brownsville, TX 78521
(956) 592-0994
bltrucking269@yahoo.com

Brownsville Gulfside Warehouse Inc.

400 R.L. Ostos Road
Brownsville, TX 78521
(956) 831-4241 Fax: (956) 831-2200
rsarquis@brownsvillegulfside.com
www.dixshipping.com

CSC Sugar

8700 Old Highway 48
Brownsville, TX 78521
(915) 328-7851
nrodriguez@cscsugar.com
www.cscsugar.com

BUSINESS DIRECTORY

Dix Shipping Company Inc.

5500 R.L. Ostos Road
Brownsville, TX 78521
(956) 831-4228 Fax: (956) 831-8559
lostos@dixshipping.com
www.dixshipping.com

Electro-Hi LLC

2801 R.L. Ostos Road
Brownsville, TX 78521
(956) 434-1466
electrohi@sbcglobal.net

Forza Steel

40881 State Hwy. 48
Brownsville, TX 78521
www.forzasteel.com

Gulf Facilities Inc.

4201 Doust Road
Brownsville, TX 78521
(956) 831-4007 Fax: (956) 831-9751
nfo@schaferstevedoring.com
www.gulf-facilities.com

JTM II Ltd.

550 E. Levee St.
Brownsville, TX 78520
(956) 542-3642 Fax: (956) 542-3698
marshall@ransomeray.com

Jonick-Lopez International Transport LLC

5801 Foust Road
Brownsville, TX 78521
(956) 838-1252 Fax: (956) 838-1253
jonicklopez@gmail.com

Jose Luis Garcia

2600 N. Indiana Ave.
Brownsville, TX 78526
(956) 592-1820
steelsecondary@aol.com

Kuehne + Nagel

15450 Diplomatic Plaza
Houston, TX 77032
(281) 449-8888
jim.mcneille@kuehne-nagel.com
www.kuehne-nagel.com

Panalpina Inc.

19409 Kenswick Drive
Humble, TX 77338
(281) 446-0600
Fax: (281) 548-7553
carol.fox@panalpina.com
www.panalpina.com

Parker & Company

4694 Jaime Zapata Ave.
Brownsville, TX 78521
(956) 831-2000 Fax: (956) 831-4140
fparker@parker-logistics.com
www.parkerandcompany.com

Pittsburgh Intermodal Terminals

90 Century Drive Ambridge, PA 15003
(724) 822-2456 Fax: (724) 266-3911
vnicholas@nicholasinc.com
www.nicholasinc.com

Port Warehouse Properties LP

2700 R.L. Ostos Road
Brownsville, TX 78521
(956) 831-8533
jcowen2@cowen-group.com

Posey International

3664 Commerce Dr. Suite B
Brownsville, Texas 78520
(956) 350-4454
info@posey-intl.com
CHB@posey-intl.com
www.posey-intl.com

OmniTRAX Inc.

252 Clayton St., 4th Floor
Denver, CO 80206
(303) 398-0500
info@omnitrax.com
www.omnitrax.com

Roser & Cowen Logistical Customs Services LTD

4695 Towerwood Drive
Brownsville, TX 78521
(956) 831-8533
nroser@rosercowen.co
www.rosercowen.com

Schafer Stevedoring

4201 Foust Road
Brownsville, TX 78521
(956) 831-4007 Fax: (956) 831-9751
info@schaferstevedoring.com
www.schaferstevedoring.com

Strike LLC

40881 State Hwy. 48
Brownsville, TX 78521
(713) 376-0417
johnny.boykin@strikeusa.com
www.strikeusa.com

TLO Logistics

16651 R.L. Ostos Road
Brownsville, TX 78521
(956) 831-765
tlogisticsusa@gmail.com
www.tlogisticsusa.com

TCS Brokerage

174 Industrial Drive
Brownsville, TX 78521
(956) 544-4575 Fax: (956) 544-6950
martha@tcsbrokerage.com
www.tcsbrokerage.com

Texan Cement

3801 Foust Road
Brownsville, TX 78521
(956) 838-9115
jquintanilla@texacement.com
www.texacement.com

FISHING HARBOR

Abrego, Francisco

2500 Everglades Road
Brownsville, TX 78521
(956) 831-2884
garciabookkeeping@gmail.com

Alejandra Shrimp Outlet, Inc.

2480 Fisherman's Place Rd.
Brownsville, TX 78521

Aguiar Brothers Inc.

2330 Cajun Court
Brownsville, TX 78521
(956) 617-6501
josue.aguiar23@hotmail.com

Brownsville Shrimp Unloading Dock, LLC.

2830 Cajun Court
Brownsville, TX 78521
(956)831-9373

Burnell Marine & Supply Inc.

2230 Fisherman's Place Road
Brownsville, TX 78521
(956) 831-3502
burnelltrawlers@yahoo.com

Castellanos Corp.

3700 Gator Court
Brownsville, TX 78521
(956) 831-9373

Castro Trawlers Inc.

3520 Gator Court
Brownsville, TX 78521
(956) 521-4520
otilia_castro@yahoo.com

Co-Op Marine Railways, LLC.

3960 Dry Dock Court
Brownsville, TX 78521
(956) 838-1986

CVC Construction, Inc.

2800 Everglades Rd.
Brownsville, TX 78521
(956) 838-5636
mary.adweldingcompany@gmail.com

D&A Seafoods, LLC.

3345 Dry Dock Rd.
& 2874 Angler's Place Rd.
Brownsville, TX 78521
(512)709-9893
blackdrum25@gmail.com

Crutek

1430 Angler's Place Road
Brownsville, TX 78521
(956) 639-1183
crutekservice@gmail.com

Don Nico Trawlers Inc.

1385 Bayou Court
Brownsville, TX 78521
(956) 408-3747

E & J Trawler, Inc.

1385 Bayou Court
Brownsville, TX 78521
(956)459-8745

Fel Glo Inc.

2250 Angler's Place Road
Brownsville, TX 78521
(956) 838-1234

G&O Shrimp Co. Inc.

2315 Bayou Court
Brownsville, TX 78521
(956) 831-0427

G.C. Trawlers

3060 Cajun Court
Brownsville, TX 78521
(956) 983-2823
gabbycantu@gmail.com

Garcia Bookkeeping
2380 Everglades Road
Brownsville, TX 78521
(956) 831-9373
garciabookkeeping@gmail.com

Gonzalez Trawlers Inc.
1700 Bayou Court
Brownsville, TX 78521
(956) 792-6997
gonzal590@aol.com

Hance Holdings Inc.
2275 Angler's Place Road
Brownsville, TX 78521
(956) 279-4085
brumy101@aol.com

Iron Mike Marine Inc.
25 Hawser Bend Road
Los Fresnos, TX 78566
(956) 778-5906
imm1998@aol.com

Juan's Electric
2485 Fisherman's Place Road
Brownsville, TX 78526
(956) 312-4229

La Familia
1190 Angler's Place Road
Brownsville, TX 78521
(956) 518-3055
sosaleticia16@yahoo.com

La Wera Inc.
1395 Cajun Court
Brownsville, TX 78521
(956) 204-3586

Labor and Prosper, Inc.
1930 Bayou Court
Brownsville, TX 78521
(956) 838-1986
ochoatrawlers@gmail.com

Lighthouse Docks Inc.
2130 Cajun Court
Brownsville, TX 78521
(956) 982-4462

Linda Lou Boat Corporation
3200 Cajun Court
Brownsville, TX 78521
(956) 698-1667

Lindwood Trawlers Inc.
1995 Cajun Court
Brownsville, TX 78521
(956) 831-3604
ltrawlers@gmail.com

M/V Challenge 42 Inc.
1675 Angler's Place Road
Brownsville, TX 78521
(956) 299-0793
neddyalamos@aol.com

Maria Elena Inc.
2600 Cajun Court
Brownsville, TX 78521
(956) 943-4903
hilda_margie3@hotmail.com

portofbrownsville.com

Marine & Industrial Safety
1120 Everglades Road
Brownsville, TX 78521
(956) 639-4420
tasbapauni@aol.com

Marine Railway Inc.
3455 Gator Court
Brownsville, TX 78521
(956) 831-7828
gwlzimco@aol.com

Monita Inc.
1680 Fisherman's Place Road
Brownsville, TX 78521
(956) 742-5259
garciabookkeeping@gmail.com

National Seafoods Inc.
2675 Angler's Place Road
Brownsville, TX 78521
(956) 943-2648
billy@marineservice.us

Ocean Port Maintenance Inc.
3805 Dry Dock Court
Brownsville, TX 78521
(956) 831-0157
gonzal590@aol.com

Ochoa, Guadalupe
1695 Bayou Court
Brownsville, TX 78521
(956) 312-1756
ochoatrawlers@gmail.com

Oil Patch Fuel & Supply Inc.
2115 Bayou Court
Brownsville, TX 78521
(956) 831-4839
frank@oilpatchfuelsupply.com
www.oilpatchfuelsupply.com

OLG Petroleum LLC
1900 Fisherman's Place Road
Brownsville, TX 78521
(956) 212-2870
lugo056@gmail.com

Palo Alto Brownsville
3150 N. Indiana Ave.
Brownsville, TX 78521
(830)388-6600

Paul Piazza & Son Inc.
1745 Cajun Court
Brownsville, TX 78521
(817) 907-1557
mmasterson@paulpiazza.com

**Pollo's Diesel/
Mota's Refrigeration**
3810 Gator Court
Brownsville, TX 78521
(956) 454-6471
lossuenos1@att.net

Port Machine Shop
1720 Everglades Road
Brownsville, TX 78521
(956) 831-3508
garciabookkeeping@gmail.com

Purata Trawlers Inc.
1940 Bayou Court
Brownsville, TX 78521
(956) 233-9451
purata1@juno.com

Reyes Marine Industries Inc.
2020 Bayou Court
Brownsville, TX 78521
(956) 838-1219
creyes4734@aol.com

Rodco Marine Supply Inc.
1750 Angler's Place Road
Brownsville, TX 78521
(956) 831-8271
gloriaaa@rodcomarine.com
www.rodcomarine.com

S T Marine
3210 Dry Dock Court
Brownsville, TX 78521
(956) 572-2281
lalejandro@rgv.rr.com

Sea Breeze Marine Inc.
1515 Bayou Court
Brownsville, TX 78521
(956) 371-0017
garciabookkeeping@gmail.com

Shallow Stalker Boats LLC
2780 Angler's Place Road
Brownsville, TX 78521
(956) 943-1551
wesellboats@yahoo.com

Shrimp Outlet
2230 Fisherman's Place Road
Brownsville, TX 78521
(956) 831-8114
lburnell@aol.com
www.shrimpoutletbrownsville.com

Snodgrass Inc.
2025 Angler's Place Road
Brownsville, TX 78521
(956) 831-2846
neddyalamos@aol.com

Texas Shrimp Association
1000 Everglades Road
Brownsville, TX 78521
(956) 831-6550
andreahance@texasshrimp
association.org
www.texasshrimpassociation.org

Two Fishing Friends Inc.
2000 Cajun Court
Brownsville, TX 78521
(956) 572-7658

Welding Works International
2800 Everglades Road
Brownsville, TX 78521
(956) 838-5636
mary.adweldingcompany@gmail.com
www.weldingworks.us

Whelan Industries, Inc.
3060 Cajun Court
Brownsville, TX 78521
(956) 330-7574
j22rec@gmail.com

Wolfe Sandblasting & Industrial Painting
1800 Bayou Court
Brownsville, TX 78521
(956) 312-1065
donwolfe75@gmail.com
www.wolfesandblastingandindustrial
painting.com

Your Port. Our Community.

Since 1936



JOBS

Cultivating sustainable workforce opportunities and developing human capital.



COMMUNITY

Promoting educational initiatives and improving quality of life in the Rio Grande Valley.



ENVIRONMENT

Preserving the regional ecosystem and natural resources for present and future generations.



INDUSTRY

Supporting existing industries and fostering economic growth by connecting the region with global markets.

PORT OF
BROWNSVILLE
the port that works

ADVERTISER'S DIRECTORY

Brownsville Licensed U.S. Customs Brokers Association Page 46

Gulf Stream Marine Inside Front Cover

International Shipbreaking Ltd Back Cover

Lone Star National Bank Inside Back Cover

OmniTRAX Page 1

Pharr International Bridge.....Page 68

Port of Brownsville Page 5, 62, & 64

Schaefer Stevedoring Page 3

The Port Occupational and Medical ClinicPage 63

Valley Grocers LLCPage 4



"WHERE OSHA EXPERIENCE MEETS QUALITY CARE"

Your time and workforce are our priority.
 Minimal wait times and OSHA knowledgeable staff to
 provide your business with the best clinical care in
 the most convenient location.



**Occupational Medicine
& Occupational Physicals**

- Respiratory FIT Testing
- Job Injuries/ Worker's Compensation
- Rapid COVID-19 Testing
- Pre & Employment Physicals



**Family
Medicine**

- Audiograms
- DOT Physicals
- Medical Care
- On-Site X-Rays & Radiology Reports



**Lab work
& Studies**

- Online Reporting to Employers
- On-Site Rapid Drug Screens
- DOT Drug Screens
- Breath Alcohol Testing
- Pulmonary Function Tests
- Vaccinations / Immunizations
- Minor Surgical Procedures & More
- FAA Certified Aviation Physicals

20035 State Highway 48, Brownsville, Texas | (956) 431-0452 | www.theportclinic.com | brownsville@theportclinic.com | Fax (956) 431-0454

EXPERT LOGISTICS ON DEMAND

ANYWHERE. ANYTIME. ON TIME.



CONTACT US

1000 Foust Road Brownsville, TX 78521
+1 (956) 831-4592
www.portofbrownsville.com

PORT OF
BROWNSVILLE
the port that works

ALPHABETICAL LISTING

905/BMW Inc (956) 832-0280
A-Mex Financial Services (956) 544-5000
ABC Gulf Coast Terminal LLC (956) 838-0042
AEP Texas (361) 881-5849
AP Sensing Americas LP (281) 304-0128
Abrego, Francisco (956) 831-2884
Action Supply (281) 315-3841
Aguaworks Pipe & Supply LLC (956) 831-2500
Aguilar Brothers Inc (956) 617-6501
Alamo Chamber of Commerce (956) 787-2117
Alamo Concrete Products Ltd (210) 208-1570
Alamo Economic Development Corporation (956) 787-6622
All Star Metals LLC (956) 838-2110
Allied Mineral Products Inc.A16 (956) 831-2022
Alton Chamber of Commerce (956) 432-0760
American Association of Ports Authorities (703) 684-5700
American Commercial Barge Line (800) 457-6377
American Oxygen Co +52-844-4390707
American River Transportation Company (504) 431-1488
Amspec (361) 452-9214
American Surveillance (956) 504-5656
Arguindogui Oil Co (956) 722-5251
Austin Star Detonator Co (956) 831-7751
Auto Lineas Sigifredo Garcia Palacios SA de CV (956) 442-3449
Avant Premium Water & Ice (956) 364-2211
B & L Freight Services Inc (956) 592-0994
BC Equipment Sales Inc (956) 379-8664
BNSF Railway (888) 428-2673
Back Up Solutions (956) 342-0506
Bank of America (956) 544-6839
Bay Bridge Texas LLC (956) 838-1414
Beach Resort at South Padre Island (956) 426-9066
Ben's Glass & Metal (956) 546-1236
Biehl & Company (956) 831-3224
Bluewing One LLC (713) 515-4288
Bluewing Royal (713) 515-4288
Border Customs Service (956) 548-0311
Bougambillas Construction LLC (956) 541-1390
Bravo Motor Carriers (281) 768-8843
Brazos Santiago Pilots (956) 943-3680
British Consulate-General Houston (713) 210-4000
Brownsville & Rio Grande International Railway (BRG) (956) 548-9201
Brownsville Chamber of Commerce (956) 542-4341
Brownsville Gulfside Warehouse Inc (956) 831-4241
Brownsville Licensed U.S. Customs Brokers
Association (956) 546-5544
Brownsville Mooring (956) 551-4736
Brownsville Navigation District Commissioners (956) 831-4592
Brownsville Public Utilities Board (956) 983-6100
Brownsville South Padre Island
International Airport (956) 542-4373
Bryant Industrial Services LLC (956) 838-5120
Burnell Marine & Supply Inc (956) 831-3502
C & J Logistical Services Inc (956) 214-5050
C.R. Trucking LLC (956) 572-5351
CSC Sugar LLC (915) 328-7851
Cameron County International Bridge System (956) 574-8771
Cameron County Regional Mobility Authority (956) 621-5571
Cameron County Sheriff's Office (956) 554-6700

Camin Cargo Control (956) 832-0789
Canadian Pacific Kansas City 011-52-818-305-7850
Canal Barge (504) 581-2424
Castellanos Corp (956) 831-9373
Castro Trawlers Inc (956) 521-4520
Celtic Marine and Logistics (225) 752-2490
CEMEX Construction Materials (956) 386-1452
Chase Bank (956) 982-7606
Chavez Shrimp Co. LLC (956) 341-9696
Choptank Transport Inc (800) 568-2240
CITGO Petroleum Corporation (956) 831-8241
City of Brownsville (956) 546-4357
Conroe Wood Products Inc (936) 760-2974
Co-Op Marine Railways LLC (956) 831-9373
Courtyard by Marriott Brownsville (956) 350-4600
CRV Terminals (956) 621-1245
DPS Alarms (956) 541-6056
DSV Air & Sea Inc (956) 831-4222
Daniel B. Hastings Inc (956) 831-7555
Diamondback Pipeline LLC (956) 831-3531
Diesel Fuel Injection Inc (956) 831-4744
Dix Agency Brownsville LP (956) 831-4228
Dix Shipping Company Inc (956) 831-4228
Don Nico Trawlers Inc (956) 408-3747
Donna Economic Development Corporation (956) 998-7233
Dulce P. Villarreal CHB (956) 372-4569
Duro Bag, a Novolex Company (956) 831-4206
EarthCon Consultants, Inc (361) 356-4986
EMR/International Shipbreaking Ltd. LLC (956) 831-2299
Edinburg Chamber of Commerce (956) 383-4974
Edinburg Economic Development Corporation (956) 383-7124
Edwards Abstract and Title Co (956) 542-6777
Electro-Hi LLC (956) 434-1466
Elsa Economic Development Corporation (956) 262-2127
Epoxy Design Systems Inc (713) 461-8733
Equipment Depot (956) 461-5858
Estrada Hinojosa & Company, Inc (214) 658-1670
Express Employment Professionals (956) 550-8510
Facility Solutions Group (956) 230-2505
Fairfield Inn & Suites by Marriott, Brownsville North (956) 667-5278
Fel-Glo Inc (956) 838-1234
Fillette Green Shipping Services Corporation (361) 446-9547
Firebird Bulk Carriers Inc (956) 832-0888
First Community Bank (956) 547-5100
First Convenience Bank (956) 504-2000
Fortune Ferrous Inc (956) 982-0205
Frajara Express, LLC (956) 592-1020
French Consulate-General Houston (713) 572-2799
Friends of Rio Grande Valley Reef Inc (956) 433-9783
Frost Bank (956) 544-6301
Fugro (USA) Inc (713) 369-5600
G & O Shrimp Co. Inc (956) 831-0427
G & T Paving LLC (956) 546-3633
G.C. Trawlers (956) 983-2823
GAC North America (361) 883-7254
GDO Trucking (956) 572-2513
Gallegos Electric Inc (956) 542-0058
Garcia Bookkeeping (956) 831-9373
General Pipe & Industrial Constructors - LA LLC (956) 592-6820

General Steamship Corporation	(361) 883-2300	Lupe's Wrecker Service	(956) 831-4188
Gonzalez Engineering & Surveying Inc	(956) 546-5515	M & M Mooring & Marine Services	(956) 371-2476
Gonzalez Trawlers Inc	(956) 792-6997	M/V Challenge 42 Inc	(956) 299-0793
Greater Brownsville Incentives Corporation	(956) 561-4133	MEG Engineers	(956) 702-8500
Gulf Facilities Inc	(956) 831-4007	Magic Valley Concrete LLC	(956) 580-2502
Gulf Harbor Shipping LLC	(361) 888-7400	Magic Valley Electric Cooperative	(866) 225-5683
Gulf Stream Marine Inc	(956) 831-6766	Maria Elena Inc	(956) 943-4903
H & H Oil	(361) 289-5220	Marine & Industrial Safety	(956) 639-4420
HDR Engineering Inc	(361) 696-3300	Marine Railway Inc	(956) 831-7828
Halff Associates	(956)303-7100	Marine Salvage & Services Inc	(956) 943-2648
Hampton Inn & Suites Brownsville	(956) 548-0005	Matthew Leyendecker	(956) 504-1700
Hance Holdings Inc	(956) 279-4085	Motus T1 Terminals	(210) 716-8523
Harbor Master	(956) 831-8256	Motus T2 Fuel Oil Terminals	(210) 716-8523
Harlingen Chamber of Commerce	(956) 423-5440	McAllen Chamber of Commerce	(956) 682-2871
Harlingen Economic Development Corporation	(956) 216-5081	McAllen Economic Development Corporation	(956) 682-2875
Heartland Barge	(314) 304-6688	Mediterranean Shipping Company	(212) 764-4800
Heavy-Duty Equipment Inc	(956) 831-2783	Mejia & Rose Inc	(956) 544-3022
Hoisting Wire Rope & Sling Co	(361) 888-LIFT (5438)	Mercedes Chamber of Commerce	(956) 565-2221
Holiday Inn	(956) 541-3332	Mercedes Development Corporation	(956) 565-2230
Holt CAT	(956) 292-7900	Mexican Consulate-General Brownsville	(956) 542-4431
Homewood Suites by Hilton Brownsville	(956) 574-6900	Millennium Engineers	(956) 702-8500
Host Agency	(361) 452-8671	Mission Chamber of Commerce	(956) 585-2727
IBC Bank	(956) 547-1000	Mission Economic Development Corporation	(956) 585-0040
Inchape Shipping	(361) 882-1771	Molina Trucking	(956) 299-1397
Ingram Barge Line	(615) 298-8200	Monita Inc	(956) 742-5259
Inter National Bank	(956) 574-8500	Moore Diesel Service	(956) 433-9608
Intercoastal Salvage Inc	(956) 831-8661	Moran Gulf Shipping	(361) 884-0903
Interlube Corporation	(956) 831-7046	National Seafoods Inc	(956) 943-2648
International Longshoremen's Association No. 2995	(956) 831-4133	NAVCO Logistics	(956) 542-4138
International Machine Shop	(956) 838-1234	Norton Lilly International	(361) 888-6800
International Seafarer Center	(956) 831-4321	Nuga Diesel Inc	(956) 541-7169
Intertek-PSI	(956) 423-6826	Nustar Logistics LP	(210) 918-5846
Iron Mike Marine Inc	(956) 778-5906	OLG Petroleum LLC	(956) 212-2870
JTM II LTD	(956) 542-3642	Ocean Port Maintenance Inc	(956) 831-6348
Jonick-Lopez International Transport LLC	(956) 838-1252	Ochoa, Marcelino	(956) 312-1756
Juan's Electric	(956) 312-4229	Oil Patch Fuel & Supply Inc	(956) 831-4839
Kempco Inspection Services Inc	(713) 926-1005	Omega Rail Services Inc	(830) 488-6224
Kirby Corporation	(713) 435-1000	OmniTRAX Inc	(303) 398-0500
KLM Terminal	(210) 867-5443	Our Lady of the Lake University Rio Grande Valley Campus	(956) 277-0146
Koncept Safety	(210) 521-1980	PMI Service North America Inc	(713) 567-0189
Kuehne + Nagel	(281) 449-8888	PNC Bank	(956) 547-3900
La Familia	(956) 518-3055	Palmview Chamber of Commerce	(956) 862-3257
La Feria Chamber of Commerce	(956) 277-0601	Panalpina Inc	(281) 446-0600
La Feria Economic Development Corporation	(956) 797-2261	Panasonic	(956) 365-7700
La Joya Economic Development Corporation	(956) 581-7002	Parker & Company	(956) 831-2000
La Quinta Inn & Suites Brownsville North	(956) 350-2118	Parker Towing	(205) 349-1677
La Wera Inc	(956) 204-3586	Paul Piazza & Son Inc	(817) 907-1557
Labor and Prosper, Inc	(956) 838-1986	Pearl South Padre Resort	(956) 761-6551
Law Office of Santiago Galarza	(956) 982-1984	PeopleReady	(956) 982-1443
LeBeouf Brothers Towing Company	(985) 594-6691	Pete's Fleet	(956) 491-1011
Lighthouse Docks Inc	(956) 943-7662	Pharr Economic Development Corporation	(956) 402-4332
Linda Lou Boat Corporation	(956) 698-1667	Pharr International Bridge	(956) 402-4660
Linwood Trawlers Inc	(956) 831-3604	Philip T. Cowen CHB	(956) 541-6031
Livingston International	(956) 504-6440	Phoenix International Holdings Inc	(281) 815-8050
Loera Customs Brokerage	(956) 831-9000	Pile Dynamics Inc	(623) 580-8990
Loma Alta Skeet & Trap Inc	(956) 371-6162	PlainsCapital Bank	(956) 554-7100
Lone Star National Bank	(956) 574-7300	Plitt Crane & Rigging	(956) 831-4278
Los Fresnos Chamber of Commerce	(956) 233-4488	Pollo's Diesel /Moto's Refrigeration	(956) 454-6471

Port Isabel Chamber of Commerce	(956) 943-2262	Snodgrass Inc	(956) 831-2846
Port Isabel-San Benito Navigation District	(956) 943-7826	SOLICE - Full Color Digital Signs	(956) 266-3018
Port Machine Shop	(956) 831-3508	South Padre Island Chamber of Commerce	(956) 761-4412
Port of Brownsville	(956) 831-4592	South Padre Island Economic Development Corporation	(956) 761-6805
Port of Brownsville Administration	(956) 831-4592	South Texas College	(956) 468-6782
Port of Brownsville FTZ No. 62 Grantee	(956) 831-4592	South Texas Electric Cooperative Inc	(956) 377-7125
Port of Brownsville Recycling	(956) 831-6707	Sunoco LP,	(215) 486-2208
Port Public Scale	(956) 838-0606	Staybridge Suites	(956) 504-9500
Port Warehouse Properties LP	(956) 831-8533	Sullivan City Economic Development Corporation	(956) 485-2828
Posey International	(713) 672-1985	T.D. American Limestone Products LLC	(956) 336-9261
Purata Trawlers Inc	(956) 233-9451	TCS Brokerage	(956) 544-4575
Quality Inn	(956) 621-3299	TLO Logistics	(956) 831-7665
Quality Weighing Services Inc	(956) 831-8253	Taqueria Sylos	(956) 346-0430
Quantum-Mechanical Contractors LLC	(956) 513-1849	Terracon Consultants Inc	(956) 283-8254
R&D Personnel	(956) 971-0152	Terrier Transportation	(956) 831-9954
R. Soto Transport Truck	(956) 592-5669	Texan Cement	(956) 838-9115
RGV Partnership	(956) 968-3141	Texas A&M University Higher Education Center at McAllen	(956) 271-1300
RGV Pump & Equipment LLC dba Oil Runners	(956) 399-1400	Texas A&M University Kingsville	(361) 593-2111
RO Engineering PLLC	(956) 513-1849	Texas Best Recycling LLC	(956) 831-8300
RM Walsdorf Inc	(956) 831-3984	Texas Community Bank	(956) 542-7333
Raba Kistner Consultants Inc	(956) 682-5332	Texas Economic Development Corporation	(512) 936-0100
Rabalais I & E Constructors	(361) 242-3121	Texas Gas Service	(512) 370-8220
RARE Import-Export LLC	(956) 504-3133	Texas Inn Brownsville	(956) 542-5501
Raymondville Chamber of Commerce	(956) 689-1864	Texas LNG LLC	(832) 849-4920
Raymondville Economic Development Corporation	(956) 689-1860	Texas Marine Ventures Inc	(956) 943-1435
Rentfro, Irwin & Irwin Law Firm PLLC	(956) 542-4329	Texas Ports Association	(713) 670-2482
Renoworks LLC	(956) 513-1849	Texas Shrimp Association	(956) 831-6650
RescueGear Inc	(800) 321-8022	Texas Southmost College	(956) 295-3600
Residence Inn by Marriott	(956) 350-8100	Texas State Technical College	1 (800) 852-8784
Reyes Marine Industries Inc	(956) 838-1219	The Port Occupational and Medical Clinic	(956) 541-5231
Ricardo Gonzalez Customs Broker LLC	(956) 831-9651	The University of Texas Rio Grande Valley	1 (844) 288-8748
Rio Grande City Economic Development Corporation	(956) 487-3476	Transcontinental Distribution Services	(956) 832-0773
Rio Grande Council Boy Scouts	(956) 423-0250	TransMontaigne Operating Company LP	(956) 831-3531
Rio Grande LNG LLC	(713) 574-1880	Transporte Internacional Lopez Ochoa SA de CV	(956) 838-2252
Rodco Marine Supply Inc	(956) 831-8271	Transpuga SA de CV	011-52-444-824-7533
Rodiciel Inc	(956) 572-8325	TW LaQuay Marine, LLC	(956) 552-2010
Roser & Cowen Logistical Customs Services LTD	(956) 831-8533	Two Fishing Friends Inc	(956) 572-7658
Roser Customs Service Inc	(956) 546-5544	U.S. Coast Guard MSD Brownsville	(956) 832-0517
Royal Danish Consulate	(713) 622-9018	UTI, United States Inc	(956) 831-4222
Rubio Trucking	(956) 545-9325	Union Pacific Railroad	(281) 350-7592
ST Marine	(956) 831-7557	Valero Brownsville Terminal LLC	(210) 345-3206
Safe Boats International	(360) 674-7161	Valley Federal Credit Union	(956) 546-3108
San Benito Chamber of Commerce	(956) 361-9111	Valley Lubricants Inc	(956) 831-4123
San Benito Economic Development Corporation	(956) 361-3800 ext. 304	Vulcan Construction Materials LP	(956) 831-8888
San Juan Economic Development Corporation	(956) 516-3897	Welding Works International	(956) 838-5636
Sanchez, Whittington, Wood & Dijkman LLC	(956) 546-3731	Wells Fargo.....	(956) 547-1600
SA Recycling/SteelCoast	(956) 509-2031	Weslaco Area Chamber of Commerce	(956) 968-2102
Schaefer Stevedoring & Logistics	(956) 831-4007	Weslaco Economic Development Corporation	(956) 969-0838
Sea Breeze Marine Inc	(956) 371-0017	West Gulf Maritime Association	(713) 678-7655
Seadrift Pipeline Corporation	(282) 966-4068	West Plains LLC	(832) 413-2466
Seahorse Transportation Inc	(956) 831-0600	Wolfe Sandblasting & Industrial Painting	(956) 312-1065
Seatrium AmFELS, Inc	(956) 831-8220	Zimco Marine LLC	(956) 831-7828
Shallow Stalker Boats LLC	(956) 943-1551	ZIWA Corporation	(956) 542-8167
Shallow Water Marine	(956) 240-4084		
Sharyland Distribution & Transmission Services LLC	(214) 978-8351		
Shrimp Outlet	(956) 831-8114		
Signet Maritime Corporation	(956) 838-6800		



Pharr

International Bridge

Your Connection.
Your Business.
Your Bridge.

INVESTING *Big...* ...FOR *Faster* TRADE

Building sustainable infrastructure today to meet the needs of tomorrow.



Bridge Expansion (2nd Span) Project
Construction starts in 2023

Competitive Advantage:

- 4 Additional Lanes-F.A.S.T. Lanes
- Intelligent Traffic System
- Increased Capacity & Efficiency



DAP 16 Project
Construction starts in 2023

Competitive Advantage:

- Cold Chain Streamlined Ag-Produce Inspections
- Dry Goods Process Improvements
- Increased Commercial Truck Throughput



DAP 15 Project
Construction ends in 2023

Competitive Advantage:

- 2 Additional Primary Lanes & 2 Exit Lanes
- Gate-to-Gate Service for Maximum Efficiency
- Reduced Truck Wait Times

For more information about the Pharr International Bridge, contact:

956-402-4660
www.pharrbridge.com

Follow us on:

